

UNITED STATES

A T B C B

UFAS ACCESSIBILITY CHECKLIST

Prepared For:

U.S. Architectural & Transportation
Barriers Compliance Board
1331 F Street, NW; Suite 1000
Washington, D.C. 20004-1111

UFAS Accessibility
Checklist

Prepared For:

U.S. Architectural & Transportation
Barriers Compliance Board
1331 F Street, NW; Suite 1000
Washington, D.C. 20004-1111

Prepared By:

Barrier Free Environments

In Conjunction With:

Adaptive Environments Center

June 1990

Produced By: Barrier Free Environments
P.O. Box 30634
Raleigh, NC 27622

in conjunction with:

The Adaptive Environment Center
374 Congress Street, Suite 301
Boston, MA 02210
Elaine Ostroff, Executive Director

Project Oversight:	Ron Mace and Lucy Harber
Project Manager:	Elaine Ostroff
Concept and Introduction:	Elaine Ostroff
Survey Author:	Lisa Ouellette
Production:	Doug Ware, Meredith Hughes, Diane Mailey
Consultation:	Chris Palames
Technical Assistance:	Pauline Nee

Prepared for: Architectural and Transportation Barriers Compliance Board
1111 18th Street, NW; Suite 501
Washington, D.C. 20036

Contract Manager:	Laurinda Steele
Technical Assistance:	Ellen Harland, Ruth Lusher

Table of Contents:

[Introduction](#)4
 Purpose
 Where does UFAS apply?
 UFAS and Employee Areas
 How the Workbook is Organized

[Survey Instructions](#)6
 Approach to Surveying
 Preparing to Survey
 Step 1: Determine Occupancy Classification
 Step 2: Determine Minimum Requirement
 Step 3: Copy and Assemble Survey
 Step 4: Survey

[Occupancy Classification Chart](#)9

[Building Identification Form](#)11

[Minimum Requirements Summary Sheets](#)13
 Parking and Passenger Loading Zone
 Site Accessible Route
 Entrance
 Building Accessible Route
 Rooms and Assembly Spaces
 Bathrooms
 Special Facilities

The Survey Forms

General Requirements:

- Form 1: Parking
- Form 2: Passenger Loading Zones
- Form 3: Pathways
- Form 4: Drinking Fountains and Telephones
- Form 5: Ramps
- Form 6: Stairs
- Form 7: Lifts
- Form 8: Entrances
- Form 9: Doors and Gates
- Form 10: Building Lobbies and Corridors
- Form 11: Elevators
- Form 12: Rooms and Spaces
- Form 13: Assembly Rooms
- Form 14: Toilet Rooms: Toilets, Sinks and Mirrors
- Form 15: Bathtubs and Showers

Special Facilities:

- Form 16: Restaurants and Cafeterias
- Form 17: Health Care
- Form 18: Mercantile
- Form 19: Libraries
- Form 20: Postal Facilities
- Form 21: Dwelling Units

Appendices:

- Definitions
- List of Consumer Information for Adaptable Dwelling Units
- Measurement Guides

Introduction

Purpose

The purpose of this workbook is to enable people to survey buildings for compliance with the Uniform Federal Accessibility Standards (UFAS). UFAS defines environments which are safe, accessible and usable by people of all ages and abilities. Accessible architecture acknowledges that physical abilities change from childhood to old age, and that the experience of functional limitations is not exceptional but universal. In an accessible environment, the inevitable changes in people's bodies will not limit their ability to reside in their own homes, to work, travel, shop and participate fully in community life.

This survey covers UFAS requirements for new construction. It can also be used to survey existing buildings to identify those features or elements in need of modifications.

This workbook can be used in conjunction with the UFAS Retrofit Manual which will be available from the Architectural and Transportation Barriers Compliance Board (ATBCB) in 1991. The illustrated Retrofit Manual will highlight accessibility options for alterations and additions in a wide range of older and historic buildings.

No special training is necessary to use this survey. The survey is for use by design professionals or concerned citizens. In recent years, citizens have frequently monitored the accessibility of public facilities. This involvement has become an important force in the national movement towards integration of people with disabilities. We hope that this manual will be helpful to all interested parties.

Where does UFAS apply?

UFAS applies to any facility covered by the Architectural Barriers Act of 1968 and Section 504 of the Rehabilitation Act of 1973.

The Architectural Barriers Act (ABA) requires that building and facilities which are designed, constructed, altered or lease by or on behalf of the federal government be accessible. The ABA also requires that most buildings and facilities constructed or altered with federal grants or loans be accessible.

Section 504 is often referred to as the "civil rights act for people with disabilities." This law requires that all programs and services which receive federal funding be accessible to handicapped persons. Architectural modifications may be necessary to meet this requirement. Section 504 also requires that buildings and facilities which are constructed by recipients of federal funds be accessible.

UFAS and Employee Areas

Unlike many state codes, UFAS requires employee areas to be accessible. Exemptions are limited to elevator pits, elevator penthouses, mechanical rooms, piping or equipment catwalks, lookout galleries, electrical and telephone closets, and general utility.

How the Workbook is Organized

This workbook presents all of the technical requirements of UFAS in the logical progression of traveling to and through a building. The 21 survey forms represent elements on the site and in the building. Many of UFAS's general requirements repeat on different forms because they apply to more than one element.

The survey materials reflect the three levels of UFAS requirements: Occupancy Classifications, Minimum Requirements, and Technical Requirements. Occupancy Classifications tell you the general requirements for your facility type. Minimum Requirements tell you what to survey, such as an accessible route or a bathroom. And the Technical Requirements give you specific features those elements must have. The survey process moves through a parallel structure:

- Step 1: Occupancy Classifications Chart
- Step 2: Minimum Requirements Summary Sheets
- Step 3: Survey Forms (Technical Requirements)
 - Form 1: Parking
 - Form 2: Passenger Loading Zones
 - Form 3: Pathways
 - Form 4: Telephones and Drinking Fountains
 - Form 5: Ramps
 - Form 6: Stairs
 - Form 7: Lifts
 - Form 8: Entrance
 - Form 9: Doors and Gates
 - Form 10: Building Lobby, Corridor
 - Form 11: Elevator
 - Form 12: Rooms and Spaces
 - Form 13: Assembly Rooms
 - Form 14: Bathrooms: Toilets, Sinks and Mirrors
 - Form 15: Bathrooms: Bathtubs and Showers
 - Special Facilities:
 - Form 16: Restaurants and Cafeterias
 - Form 17: Health Care
 - Form 18: Mercantile
 - Form 19: Libraries
 - Form 20: Postal Facilities
 - Form 21: Dwelling Units

Survey Instructions

Approach to Surveying

The survey can be used in part or in full, depending on your level of concern and time commitment. If you are surveying a facility which you are familiar with, you may already know what the general access problems are and will want to use this survey to check specific details. If you are unfamiliar with the facility, it is helpful to make an initial tour through the building to orient yourself.

Although the survey is structured for use on site, it can also be used by architects and facility managers to review architectural plans.

Preparing to survey

Make contact with the building management to advise them that you will be surveying and that you will be glad to share your information with them. Ask if they can provide you with a building plan. A plan can be very helpful, particularly if you are surveying a large facility. You can assign numbers to areas or elements on the plan and use the same numbers to correlate the Survey Forms.

Bring a copy of UFAS with you when you survey. Since the survey's questions are fairly brief, an understanding of the full code requirements in UFAS is necessary. Also, not every illustration in UFAS has been included in the survey. Illustrations are provided only for those survey questions which cannot be clearly stated with words.

Step 1: Determine Occupancy Classifications

After you have affirmed that UFAS has jurisdiction over the facility, look at the Occupancy Classifications Chart. Find the facility type in the left-hand column of the Chart. (If you cannot determine your facility's type, see the detailed list in UFAS 4.1.4.) The areas of the facility which must be accessible are checked off or listed to the right. Fill in the Building Identification Form and include this information.

Step 2: Determine Minimum Requirements

Minimum Requirements tell you which elements are required to be accessible, such as a particular entrance or pathway. Use the Minimum Requirements Summary Sheets to identify the specific elements of your facility which must be accessible.

With the Minimum Requirement Summary Sheets in hand, take a quick tour of the facility or look at the building plans. As you go through the facility, complete each Summary Sheet in the order they are presented. The Summary Sheets will ask you to inventory the elements of your facility which must be accessible.

The principal of the "accessible route" is key to the Minimum Requirements Summary Sheets. Simply put, an "accessible route" is a path of travel which a person in a wheelchair, an elderly person, or someone with another mobility limitation would find safe and easy to use. (See definition in the Appendix.) The Minimum Requirements Summary Sheets define where these accessible routes must be.

Step 3: Copy and Assemble the Survey

Return to your workplace with the completed Summary Sheets. They will tell you how many copies to make of each Survey Form. Some Forms will be needed more than once, others will not be needed at all.

Copy the necessary Survey Forms and attach them to the Summary Sheet which called for them. When you're finished, you'll have a series of Survey Forms which progress logically through the facility and are divided by the seven Summary Sheets. If you are working with a team, you can give team members a complete section covered by a Summary Sheet. Cover the entire package with the Building Identification Sheet.

Step 4: Survey

Bring a copy of UFAS, a clipboard, a pencil or a pen, a flexible measuring tape, and a stick of chalk for marking distances on surfaces. You may also want a line level or other device to measure ramp slopes, and a fish scale for determining door pressure.

Each Survey Form has a title block which allows you to pinpoint the element you are inspecting. Be sure to fill in the location of the element and the facility name on each Survey Form.

Each survey question has a UFAS section number. If you do not understand the question, look up the section in the UFAS document. Illustrations referenced in the survey forms are attached to the back of the form. If you have a question about a term, refer to the Definitions section in the Appendix. If you need a visual picture of where measurements are taken, refer to the Measurement Guides also in the Appendix.

Check off whether the element complies or not. If you cannot determine whether or not it complies, put a question mark in the box. Do not leave blank boxes because they will confuse someone who later reviews the forms. If the element does not exist, check "N/A" (Not Applicable).

Occupancy Classification Chart

AREAS THAT MUST BE ACCESSIBLE

OCCUPANCY CLASSIFICATIONS	Public Areas	Areas where a physically handicapped person may be employed	All Areas
Military Facilities	x	x	
	Accessibility recommended but not required in work areas for able-bodied military personnel only.		
Military Housing	5% of the units must be accessible or adaptable and common use areas must be accessible.		
Assembly	x	x	
Business	x	x	
Educational			x
Factory Industrial	x	x	
Hazardous	x	x	
Child Care Facilities	x	x	
	Common use areas.		
Long Term Care Facilities	x	x	
	Common use areas and 50% of patient toilet rooms and bedrooms		
Outpatient Facilities	x	x	
	Common use area and all patient toilet rooms and bedrooms		
General Purpose Hospitals	x	x	
	Common use areas and at least 10% of patient toilet and bedrooms		
Special Purpose Hospitals	x	x	
	Common use areas and all patient toilet and bedrooms		
Institutional Facilities	x	x	
Detention or Correctional	5% of residential units available (but at least one unit) and all common use and visitor use spaces		

Merchantile	x	x	
Hotels, Motels and Boarding Houses	x	x	
	5% of the units (but not less than one).		
Federally Assisted Apartments	5% of the units (but not less than one) in projects of 15 or more units or a percentage determined by the appropriate federal agency.		
Federally Owned Apartments	5% of the units (but not less than one).		
Dormitories	5% of the units (but not less than one).		
Federally Assisted Rental 1&2 Family Dwellings	5% of the units (but not less than one) in projects of 15 or more units or a percentage determined by the appropriate federal agency.		
Federally Assisted Homeownership	To be determined by the buyer.		
Federally Owned 1&2 Family Dwellings	5% of the units (but not less than one).		
Storage	x	x	
Utility and Miscellaneous	x	x	

Building Identification

Facility Name: _____

Facility Address: _____

Federal funding used in building (if known): _____

Occupancy Type: _____

Occupancy Classification Requirements: _____

Name(s) of surveyors: _____

Dates(s) of survey: _____

Minimum Requirements Summary Sheets:

Parking and Passenger Loading Zones

Site Accessible route

Entrance

Building Accessible Route

Rooms and Assembly Spaces

Bathrooms

Special Facilities

Parking and Passenger Loading Zones (Attach needed Forms to this summary sheet.)

Parking:

General Parking: Each parking lot provided for employees or visitors is required to have accessible parking spaces. (4.1.1(5)(a))

Parking at Accessible Housing: Where parking is provided for all residents, one accessible parking space shall be required for each accessible dwelling unit. Where parking is provided for only a portion of the residents, an accessible parking space shall be provided upon request from the occupant of an accessible dwelling unit. Where parking is provided for visitors, 2% but not less than 1 shall be accessible.(4.1.1(5)(d)).

Parking at Health Care Facilities: Employee and visitor parking at general health care facilities shall meet (4.1.1(5)(a)). At outpatient facilities, 10% of the total number of parking spaces provided shall be accessible. At spinal cord injury facilities, employee and visitor parking 20% of the total number of spaces provided shall be accessible.

List the parking lots to be surveyed:

Survey each of these lots with a copy of Survey Form 1: Parking

Passenger Loading Zones:

Where passenger loading zones are provided, at least one must be accessible. (4.1.1(5)(b)). You can usually identify the accessible passenger loading zone by a sign bearing the international symbol of accessibility. If no sign is present survey existing passenger loading zones for an accessible one. Begin with the passenger loading zone closest to the accessible entrance.

List the passenger loading zones to be surveyed:

Survey each passenger loading zone with a copy of Survey Form 2: Passenger Loading Zone

Site Accessible Route (Attach needed Forms to this summary sheet).

UFAS 4.4.4(1) requires the following elements on the site to be connected by an accessible route. If accessible route connections do not exist between these elements, that in itself is a violation. If they do exist then the completed survey will reveal their satisfactory and unsatisfactory features.

From:	To:
public transportation stops	Accessible entrance
accessible parking spaces	" "
passenger loading zones	" "
public streets and sidewalks	" "
building, facility or element on the site	other building or facility on the site

If you are using a plan drawing, you may want to mark these routes with a colored pencil.

List the accessible routes to be surveyed:

From:	To:
_____	_____
_____	_____
_____	_____
_____	_____
_____	_____
_____	_____

You'll need at least one copy of the Survey 3: Pathways for each of these routes. Use forms 4: Amenities, 5: Ramps, 6: Stairs, and 7: Lifts as you encounter these elements.

Number of Copies:

Form 3: Pathways	_____
Form 4: Phones/Drinking Fountains	_____
Form 5: Ramps	_____
Form 6: Stairs	_____
Form 7: Lifts	_____

Entrance (Attach needed Forms to this summary sheet).

UFAS 4.1.2(8) requires at least one principal entrance at each on-grade floor level to be accessible. In addition, if an entrance normally serves one or more of the functions listed below, that entrance must also be accessible:

- transportation stop
- passenger loading zone
- accessible
- parking facilities
- taxi stand
- public streets and sidewalks
- accessible interior vertical access

List the entrances to the facility which must be accessible:

You'll need at least one copy of Form 8: Entrances, and probably one copy of Form 9: Doors and Gates. If you encounter stairs, a lift, or a ramp, survey that element with its specific form.

Number of Copies:

Form 8: Entrances	_____
Form 9: Doors/Gates	_____
Form 5: Ramps	_____
Form 6: Stairs	_____
Form 7: Lifts	_____

Building Accessible Route (Attach needed Forms to this summary sheet).

UFAS 4.1.2(1) requires at least one accessible route complying with 4.3 to connect accessible building or facility entrances with all accessible spaces within the building or facility. Forms 5 to 11 cover the elements of an accessible route.

The number of corridors which you'll need to survey depends upon your facility. If you are surveying a multi-story building, but each floor is exactly the same, you'll need to survey only one floor's corridors. Another situation might be a building with identical corridors on a single-floor. Surveying one of those corridors may be sufficient. You'll need to determine a representative sampling of your facility's corridors. A copy of the building's plans will simplify this task. If the plans are unavailable, walk through the building and take an inventory of the corridors.

In a multi-story building, an accessible elevator must provide access to each level unless a ramp complying with 4.8 is provided. Stairs must comply with 4.9 if they connect levels which are not connected by an elevator.

List the corridors and lobbies to be surveyed:

Use one copy of form 12: Building Lobby and Corridor for each lobby or corridor. You'll also need copies of form 4: Telephones and Drinking Fountains to survey those elements as you encounter them.

List the ramps to be surveyed:

Use one copy of Form 5: Ramps for each ramp.

List the stairs to be surveyed:

(Use one copy of Form 6 Stairs for each staircase.)

List the elevators to be surveyed:

(Use one copy of Form 11: Elevator for each elevator.)

Rooms and Assembly Spaces (Attach needed Forms to this summary sheet.)

All rooms and assembly room which are in areas covered by your facility's occupancy classification needed to be accessible. An assembly room is defined as a room or space accommodating fifty or more individuals for religious, recreational, educational, political, social or amusement purposes, or for the consumption of food and drink, including all connected rooms or spaces with a common means of egress and ingress. Such areas as conference rooms used by fewer than 50 persons would have to be accessible in accordance with room requirements and other parts of this standard, but would not have to meet all of the requirements for an assembly occupancy.

List the rooms to be surveyed:

Use one copy of Form 18 for each room.

List the assembly spaces to be surveyed:

Use one copy of Survey Form 19 for each assembly space.

Bathrooms (Attach needed Forms to this summary sheet.)

UFAS 4.1.2(1) requires each public and common use toilet room or bathing facility to be accessible. Employee toilets are considered to be "common use".

List the bathrooms to be surveyed:

Survey the bathrooms with Form 14: Toilets, sinks and Mirrors and Form 15: Bathtubs and Showers.

Special Facilities (Attach needed Forms to this summary sheet.)

In addition to the requirements of 4.1 to 4.33, the special facilities listed below have additional requirements. If you are surveying one of these special facilities, begin with that facility's special form. Other forms, such as "Parking", may also apply.

If you are surveying a dwelling unit, go directly to Form 21: Dwelling Units. Where other forms are needed, they will be referenced in Form 21.

Special Facilities:

Form 16: Restaurants and Cafeterias

Form 17: Health Care

Form 18: Mercantile

Form 19: Libraries

Form 20: Postal Facilities

Form 21: Dwelling Units

Survey Form 1: Parking

Facility Name: _____	Total Parking in lot	Req'd Min. # Accessible Spaces
Parking Lot Location: _____	1 to 25	1
# of Spaces provided: _____	26 to 50	2
# Required to be accessible: _____	51 to 75	3
	76 to 100	4
	101 to 150	5
	151 to 200	6
	201 to 300	7
	301 to 400	8
	401 to 500	9
	501 to 1000	*
	1001 and over	**

* 2 percent of total
** 20 plus 1 for each 100 over 1000

Respond either Yes, No, or Not applicable to the following questions:

4.6.1 Are the required number of accessible parking spaces provided?
4.1.1(5a) (Note: The total number of accessible parking spaces may be distributed among parking lots if greater accessibility is achieved.)
Yes [] No [] N/A []

4.6.2 Are accessible parking spaces the closest spaces to the building's accessible entrance?
Yes [] No [] N/A []

If a parking facility serves more than one building or public space, are the accessible parking spaces the closest spaces to the parking facility's accessible pedestrian entrance?
Yes [] No [] N/A []

4.6.3 Are accessible parking spaces at least 96 inches wide with a demarcated adjacent access aisle of 60 inches? (Two spaces may share a common aisle.)
Yes [] No [] N/A []

Does the access aisle connect directly to the accessible route?
Yes [] No [] N/A []

If the parking space is designated as a van space, is the adjacent aisle at least 96 inches wide?
Yes [] No [] N/A []

Are the spaces and aisles level with no slope greater than 1:50? (This means a curb ramp cannot project into the access aisle.)
Yes [] No [] N/A []

4.6.6 Do parking spaces designated as van spaces have a vertical clearance of at least 114 inches?
Yes [] No [] N/A []

4.6.4 Does each accessible parking space have a vertical sign that is unobscured by a parked vehicle and shows the universal symbol of accessibility?
Yes [] No [] N/A []

Parking: 1

Survey Form 2: Passenger Loading Zone

Facility Name: _____

Passenger Zone Location: _____

Accessible Passenger Loading Zone Provided? []

Accessible Passenger Loading Zone Not Provided? []

4.1.1(7) Is there a sign displaying the international symbol of accessibility at the passenger loading zone?

Yes [] No [] N/A []

4.6.5 Is there a pedestrian aisle parallel to the vehicle pull-up space?

Yes [] No [] N/A []

Is the pedestrian aisle at least 5 feet wide by 20 feet long?

Yes [] No [] N/A []

If there is a curb between the pedestrian aisle and the vehicle space, is there a curb ramp?

Yes [] No [] N/A []

Is the pedestrian aisle level, with no slope greater than 1:50?

Yes [] No [] N/A []

Is the vehicle pull-up space level, with no slope greater than 1:50?

Yes [] No [] N/A []

4.3.6; 4.5.1 Is the pedestrian aisle and parking surface stable, firm, and slip-resistant?

Yes [] No [] N/A []

4.7.2 Is the slope of the curb ramp 1:12 or less?

Yes [] No [] N/A []

Is the transition from the curb ramp to the walkway, road or gutter flush and free of abrupt changes?

Yes [] No [] N/A []

Are the slopes of the road, gutter or accessible route adjoining the ramp no greater than 1:20?

Yes [] No [] N/A []

4.7.3 Is the width of the curb ramp, not including the flared sides, at least 36 inches?

Yes [] No [] N/A []

4.7.4; 4.5.1 Is the surface of the curb ramp stable, firm and slip-resistant?

Yes [] No [] N/A []

4.7.5 If the curb ramp is located where pedestrians might walk across it and if it is not protected by hand rails does it have flared sides?

Yes [] No [] N/A []

Do these flared sides have a slope of 1:10 or less?

Yes [] No [] N/A []

If sharp return curb cuts are present, is pedestrian cross traffic prohibited by walls, guardrails, shrubbery, or other elements?

Yes []

No []

N/A []

Passenger Loading Zone: 1

Survey Form 2: Passenger Loading Zone (continued)

4.7.6 Do built up curb ramps not project into vehicular traffic lanes?
Yes [] No [] N/A []

4.7.8 Are curb ramps located or protected so that they will not be obstructed by parked vehicles?
Yes [] No [] N/A []

4.5.4 Is the smaller dimension of grating openings no more than 1/2 inch, and are long dimensions of rectangular gaps placed perpendicular to the usual direction of travel?
Yes [] No [] N/A []

4.6.6 Is there at least 114 inches vertical clearance along the vehicle route to the passenger loading zone?
Yes [] No [] N/A []

Is there at least 114 inches vertical clearance at the passenger loading zone?
Yes [] No [] N/A []

Survey Form 3: Pathways

Facility Name: _____

Accessible Route to be Surveyed

From: _____ To: _____

4.3.2(1) Is there an accessible route within the boundary of the site linking public transportation stops and the accessible building entrance?
Yes [] No [] N/A []

Is there an accessible route linking accessible parking and passenger loading zones with the accessible building entrance?
Yes [] No [] N/A []

Is there an accessible route linking public streets and sidewalks with the accessible building entrance?
Yes [] No [] N/A []

4.3.2(2) Is there an accessible route connecting accessible buildings, facilities, elements and spaces on the same site?
Yes [] No [] N/A []

4.3.8 Is the accessible pathway free of steps and stairs?
Yes [] No [] N/A []

4.3.3 Is the accessible pathway at least 36 inches wide?
Yes [] No [] N/A []

Where the accessible pathway makes a U-turn around an obstacle less than 48 inches wide, does the pathway width increase to at least 42 inches on the approach and 48 inches in the turn?
Yes [] No [] N/A []

4.3.4 If the pathway is less than 60 inches wide, are there passing spaces at least 60 inches wide and 60 inches long at reasonable intervals not exceeding 200 feet?
Yes [] No [] N/A []

4.3.5; 4.4.2 Is there at least 80 inches clear head room along the pathway?
Yes [] No [] N/A []

If head room is less than 80 inches in a space next to an accessible pathway, is there a cane detectable barrier within 27 inches of the ground?
Yes [] No [] N/A []

4.4.1 If objects mounted to the wall have bottom edges between 27 and 80 inches from the floor, do they project less than 4 inches into the pathway? (Wall mounted objects with bottom edges below 27 inches may project any amount so long as they do not reduce the required clear width of an accessible route of travel.)
Yes [] No [] N/A []

If an object mounted on a post (such as a sign or a telephone) has a bottom edge between 27 and 80 inches from the ground, does the

Survey Form 3: Pathways (continued)

object project less than 12 inches into the path of travel?

Yes [] No [] N/A []

Is the accessible pathway at least 36 inches wide alongside the protruding object?

Yes [] No [] N/A []

4.1.1(7) On signs, do the letters and numbers have a width to height ratio
4.30.2 between 3:5 and 1:1, and a stroke width-to-height ratio between
1:5 and 1:10?

Yes [] No [] N/A []

4.30.3 Do the characters and symbols contrast light/dark with their
background?

Yes [] No [] N/A []

4.1.2(15); On permanent signage which identifies rooms and spaces, are the
4.30.4 characters in sans serif font?

Yes [] No [] N/A []

Are the characters and symbols on signs raised at least 1/32 inches?

Yes [] No [] N/A []

Are the raised characters or symbols between 5/8 inches and 2 inches
tall?

Yes [] No [] N/A []

4.5.1 Are accessible pathway surfaces stable, firm and slip-resistant?

Yes [] No [] N/A []

4.5.4 Is the smaller dimension of grating openings no more than 1/2 inch,
and are long dimensions of rectangular spaces placed perpendicular
to the usual direction of travel?

Yes [] No [] N/A []

4.3.7 Is the slope of the accessible pathway no greater than 1:20?

Yes [] No [] N/A []

Is the cross slope of accessible pathway no greater than 1:50?

Yes [] No [] N/A []

4.3.8; 4.5.2 When walkway levels change, is the vertical difference between them
less than 1/4 inch?

Yes [] No [] N/A []

If there is a change in level of between 1/4 inch and 1/2 inch any-
where on the accessible route, is the edge beveled with a slope 1:2?

Yes [] No [] N/A []

Are changes in level greater than 1/2 inch ramped?

Yes [] No [] N/A []

4.7.11 Where an accessible pathway crosses an island, is the island cut
through at street level?

Yes [] No [] N/A []

OR

Are there curb ramps on both sides and a level area at least 48
inches long between them?

Yes [] No [] N/A []

4.7.1 Is there a curb ramp wherever an accessible pathway meets a curb?

Yes []

No []

N/A []

Pathways: 2

Survey Form 3: Pathways (continued)

4.7.8 Are curb ramps located or protected so that they will not be obstructed by parked vehicles?

Yes [] No [] N/A []

4.7.9 Are curb ramps at crosswalks wholly contained within the crosswalk lines, except for the flared sides?

Yes [] No [] N/A []

4.7.2 Is the slope of the curb ramp 1:12 or less?

Yes [] No [] N/A []

Is the transition from the curb ramp to the walkway, road or gutter flush and free of abrupt changes?

Yes [] No [] N/A []

Are the slopes of the road, gutter, and accessible route at the top and bottom of the ramp no greater than 1:20?

Yes [] No [] N/A []

4.7.3 Is the width of the curb ramp, not including the flared sides, at least 36 inches?

Yes [] No [] N/A []

4.7.4 Is the surface of the curb ramp stable, firm and slip-resistant?

Yes [] No [] N/A []

4.7.5 If the curb ramp is located where pedestrians must walk across it and it is not protected by handrails, does it have flared sides?

Yes [] No [] N/A []

Do the flared sides have a slope of 1:10 or less?

Yes [] No [] N/A []

4.7.6 Are built up curb ramps located so that they do not project into vehicular traffic lanes?

Yes [] No [] N/A []

4.7.10 If diagonal (or corner-type) curb ramps have well defined edges, are these edges parallel to the pedestrian traffic flow?

Yes [] No [] N/A []

Is there a minimum of 48 inches clear space within the crosswalk lines at the bottom of a diagonal curb ramp?

Yes [] No [] N/A []

If the diagonal curb ramp has flared sides, does it have a minimum 24 inch segment of straight curb located on each side of the curb ramp within the crosswalk lines?

Yes [] No [] N/A []

Survey Form 4: Drinking Fountains and Telephones

Facility Name: _____

Drinking Fountains/Water Coolers

Fountain Location:

4.1.2(9) Drinking Fountains and Water Coolers: If drinking fountains are provided, then at least 50% but not less than one shall meet the following recommendations:

4.15.5(2) If the unit is free-standing or built in and does not have a clear space underneath it, does it have a clear floor space alongside it at least 30 by 48 inches which allows a wheelchair user to make a parallel approach?

Yes [] No [] N/A []

4.15.5(1) If the unit is wall or post mounted is there a clear knee space between the bottom of the apron and the ground which is at least 27 inches high, 30 inches wide and 17 inches deep?

Yes [] No [] N/A []

4.4.1 If a wall mounted drinking fountain has a bottom edge between 27 and 80 inches from the floor, does it project less than 4 inches into the pathway? (Wall mounted fountains with bottom edges at or below 27 inches may project any amount so long as the required clear width of an accessible route of travel is not reduced.)

Yes [] No [] N/A []

Is there an accessible path of at least 36 inches clear alongside the drinking fountain?

Yes [] No [] N/A []

4.15.2 Is the spout outlet no higher than 36 inches from the ground?

Yes [] No [] N/A []

4.15.3 Is the spout at the front of the unit, with a water flow parallel or nearly parallel to the front edge?

Yes [] No [] N/A []

Is the water stream at least 4 inches high to allow the insertion of a cup under the stream?

Yes [] No [] N/A []

4.15.4 Are the controls located near the front edge?

Yes [] No [] N/A []

4.15.4; Are the controls operable with one hand?

4.27 Yes [] No [] N/A []

Are they operable without tight grasping, pinching, or twisting of the wrist?

Yes [] No [] N/A []

Telephones

Telephone Location:

4.1.2(16) At each bank of telephones, at least one telephone must be accessible.

4.31.1; At each bank of telephones, is there at least one accessible phone
4.1.2(16) which meets the following requirements?

Yes [] No [] N/A []

4.4.1 If a wall mounted telephone has bottom edges between 27 and 80 inches from the floor, does it project less than 4 inches into the pathway? (Wall mounted telephones with bottom edges at or below 27 inches may project any amount so long as the required clear width of an accessible route of travel is not reduced.)

Yes [] No [] N/A []

If a telephone is mounted on a post with bottom edges between 27 and 80 inches high, does it project less than 12 inches into the route of travel?

Yes [] No [] N/A []

Is there an accessible path of at least 36 inches wide alongside the telephone?

Yes [] No [] N/A []

4.31.2; Does the accessible phone have a 30 by 48 inch clear ground space
4.2.4 that allows either a forward or parallel approach by a person using a wheelchair?

Yes [] No [] N/A []

4.31.3; If the clear ground space allows only a forward approach, then is
4.2.5; the highest operable part of the phone no more than 48 inches from
4.2.6 the ground?

Yes [] No [] N/A []

If the clear ground space allows only a side approach to the telephone, then is the highest operable part of the telephone no more than 54 inches from the ground?

Yes [] No [] N/A []

4.31.7 Are telephone books also within these reach ranges?

Yes [] No [] N/A []

4.31.5 Is volume control provided on the telephone?

Yes [] No [] N/A []

4.31.6 Does the telephone have push button controls unless such service is unavailable?

Yes [] No [] N/A []

4.31.8 Is the cord from the telephone to the handset at least 29 inches long?

Yes [] No [] N/A []

Survey Form 5: Ramps

Facility Name: _____

Ramp Location: _____

4.8.2 Is the ramp slope 1:12 or less?
Yes [] No [] N/A []

Is the rise for any run 30 inches or less?
Yes [] No [] N/A []

4.8.6 Is the cross slope of the ramp surface no greater than 1:50?
Yes [] No [] N/A []

4.8.6; 4.5 Is the ramp surface non-slip?
Yes [] No [] N/A []

Is the smaller dimension of grating openings no more than 1/2 inch, and are long dimensions of rectangular gaps placed perpendicular to the usual direction of travel?
Yes [] No [] N/A []

4.8.3 Is the clear width of the ramp 36 inches or more?
Yes [] No [] N/A []

4.8.4 Is there a level landing at the top and bottom of each run?
Yes [] No [] N/A []

Is each landing at least as wide as the ramp and 60 inches long?
Yes [] No [] N/A []

Where the ramp changes direction, is the landing at least 60 by 60 inches?
Yes [] No [] N/A []

4.8.5 If the ramp rises more than 6 inches or is longer than 72 inches, does it have a handrail on each side?
Yes [] No [] N/A []

On dogleg or switchback ramps, is the inside handrail continuous?
Yes [] No [] N/A []

Is the gripping surface continuous?
Yes [] No [] N/A []

Are handrails fixed so that they do not rotate within their fittings?
Yes [] No [] N/A []

Is the top of the handrail between 30 and 34 inches above the ramp surface?
Yes [] No [] N/A []

At ends of handrails, is there at least 12 inches of level handrail beyond the top and bottom of the ramp segment?
Yes [] No [] N/A []

Are the ends of handrails rounded or returned smoothly to the floor, wall, or post?
Yes [] No [] N/A []

Ramps: 1

Survey Form 5: Ramps (continued)

4.8.5; 4.26 Is the diameter of the handrail between 1-1/4 inches and 1-1/2 inches?

Yes [] No [] N/A []

OR

Does the shape provide an equivalent gripping surface?

Yes [] No [] N/A []

At wall mounted handrails, is there exactly 1-1/2 inches between the handrail and the wall?

Yes [] No [] N/A []

4.8.7 If a ramp or landing has a drop off, does it have a 2 inch curb, a wall, railings or projecting surfaces which prevent people from falling off?

Yes [] No [] N/A []

4.8.8 Are ramps designed so that water will not accumulate on walking surfaces?

Yes [] No [] N/A []

Ramps: 2

Survey Form 6: Stairs

Stairs which connect levels that are not connected by an elevator shall comply with 4.9. (4.1.2(4))

Facility Name: _____

Stair Location: _____

- 4.9.2 In any one flight do all the steps have uniform riser height and tread width?
Yes [] No [] N/A []
- Are the risers closed?
Yes [] No [] N/A []
- Are the treads a minimum of 11 inches measured from nosing to nosing?
Yes [] No [] N/A []
- 4.9.3 Do the nosings project no more than 1-1/2 inches?
Yes [] No [] N/A []
- If the nosings do project, are the undersides beveled to prevent someone from tripping?
Yes [] No [] N/A []
- 4.9.4 Do stairways have continuous handrails at both sides of all steps?
Yes [] No [] N/A []
- On dogleg or switchback stairs, is the inside handrail continuous?
Yes [] No [] N/A []
- At ends of handrails, is there at least 12 inches of level handrail beyond the top riser?
Yes [] No [] N/A []
- At ends of handrails, is there at least one tread width of sloping handrail beyond the bottom riser plus at least 12 inches of level handrail?
Yes [] No [] N/A []
- At wall mounted handrails, is there exactly 1-1/2 inches between the handrail and the wall?
Yes [] No [] N/A []
- Is the gripping surface uninterrupted by newel posts or other obstructions?
Yes [] No [] N/A []
- Are the tops of handrails between 30 and 34 inches above the nosings?
Yes [] No [] N/A []
- Are the ends of handrails rounded or returned smoothly to the floor, wall or post?
Yes [] No [] N/A []
- Are handrails fixed so that they do not rotate within their fittings?
Yes [] No [] N/A []
- 4.9.4; 4.26 Is the diameter of the handrail between 1-1/4 inches and 1-1/2 inches? Yes []
OR
Does the shape provide an equivalent gripping surface?
Yes [] No [] N/A []
- 4.9.6 Are outdoor stairs designed so that water does not accumulate on

walking surfaces?

Yes []

No []

N/A []

Stairs: 1

Survey Form 7: Lifts

Facility Name: _____

Lift Location: _____

Lifts are not permitted in new construction except where no other alternative is possible.
4.1.2(5)

4.11.3 If a platform lift is installed, can it be used without assistance?

Yes [] No [] N/A []

4.11.2; 4.2.4 Is there at least a 30 x 48 inch clear space positioned for a person in a wheelchair to reach the controls and enter the lift?

Yes [] No [] N/A []

Is the lift platform at least 30 x 48 inches?

Yes [] No [] N/A []

4.11.2; 4.27.3; 4.2.5; 4.2.6

If the clear space allows for a forward reach, is the height of the lift control 48 inches or less?

Yes [] No [] N/A []

If the clear space allows for a side reach, is the height of the lift control 54 inches or less?

Yes [] No [] N/A []

4.11.1; 4.27 Are the controls operable with one hand?

Yes [] No [] N/A []

Are they operable without tight grasping, pinching, or twisting of the wrist?

Yes [] No [] N/A []

4.11.1; 4.5.1 Is the surface on the lift and on the accessible route of travel to which it connects stable, firm and slip-resistant?

Yes [] No [] N/A []

4.11.1; 4.5.2 If there is a change in level of between 1/4 inch and 1/2 inch, is the edge beveled with a slope of 1:2 or less?

Yes [] No [] N/A []

Lifts: 1

Survey Form 8: Entrances

Facility Name: _____

Entrance Location: _____

4.14.2 Is the accessible entrance to the building not a service entrance unless the only entrance to the building is a service entrance?
Yes [] No [] N/A []

4.14.1 Within the boundaries of the site, is the accessible entrance connected by an accessible route to existing public transportation stops, accessible parking and passenger loading zones, and to public streets or sidewalks?
Yes [] No [] N/A []

Is the accessible entrance connected by an accessible route to all accessible elements or spaces within the building or facility?
Yes [] No [] N/A []

4.14.1; 4.3.8 If there is a vertical level change between 1/4 inch and 1/2 inch at or along route to the entrance, is the edge beveled with a slope of 1:2 or less?
Yes [] No [] N/A []

If there is a vertical level change greater than 1/2 inch at the entrance, is it treated with a curb ramp, ramp, or platform lift?
Yes [] No [] N/A []

4.13.2 If turnstiles or revolving doors are used on an accessible route, is there an accessible gate or door provided to facilitate the same use pattern?
Yes [] No [] N/A []

4.13.3 Do all gates including ticket gates meet all the applicable specifications for doors?
Yes [] No [] N/A []

Entrance: 1

Survey Form 9: Doors and Gates

Facility Name: _____

Door Location: _____

4.13.2 If a revolving door or turnstile is used on an accessible route, is an accessible door or gate provided to facilitate the same use pattern?

Yes [] No [] N/A []

4.13.3 Do all gates including ticket gates meet all the applicable specifications for doors?

Yes [] No [] N/A []

4.13.4 If the doorway has two independently operated door leaves, does at least one active leaf provide a 32 inch clear opening width & maneuvering space as shown in Figure 25?

Yes [] No [] N/A []

4.13.5 When a door is open 90 degrees, is there a clear opening at least 32 inches measured between the face of the door and the door stop on the latch side?

Yes [] No [] N/A []

If the door does not require full user passage, such as a shallow closet, is the clear opening at least 20 inches?

Yes [] No [] N/A []

4.13.6 If the door is not automatic or power assisted, does it have maneuvering space relative to the direction of approach as shown in Figure 25?

Yes [] No [] N/A []

Is the floor level and clear within the required maneuvering space?

Yes [] No [] N/A []

4.13.7 If there are two doors in series, is the clear space between the walls at either end of the vestibule at least 48 inches plus the width of the door?

Yes [] No [] N/A []

Do the doors in the series swing in the same direction?

Yes [] No [] N/A []

OR

Do they swing away from the space between them?

Yes [] No [] N/A []

4.13.8 If there is a raised threshold, is it beveled at 1:2 or less?

Yes [] No [] N/A []

Is the threshold no higher than 1/2 inch? (Exception: An exterior sliding door can have a 3/4 inch threshold.)

Yes [] No [] N/A []

4.13.9 Are all handles, locks, and latches operable with one hand?

Yes [] No [] N/A []

Are they operable without tight pinching, tight grasping or twisting of the wrist?

Yes [] No [] N/A []

Survey Form 9: Doors and Gates (continued)

If there are sliding doors, is the operating hardware exposed and usable from both sides when the doors are fully open?

Yes [] No [] N/A []

Is the hardware mounted no higher than 48 inches above floor level?

Yes [] No [] N/A []

4.13.10 If the door has a closer, does it take at least three seconds to move from 70 degrees open to a point 3 inches from the latch?

Yes [] No [] N/A []

4.13.11 Do interior doors have an opening force of 5 lbs or less?

Yes [] No [] N/A []

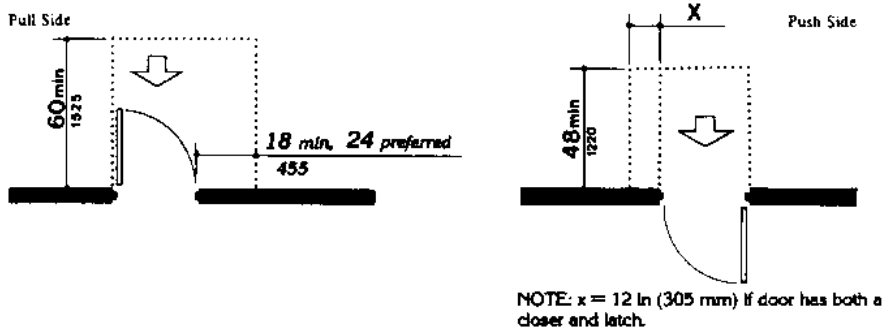
4.13.9; 4.29.3 Are doors to hazardous areas identifiable to the touch by a textured surface on the door handle, knob, pull, or other operating hardware?

Yes [] No [] N/A []

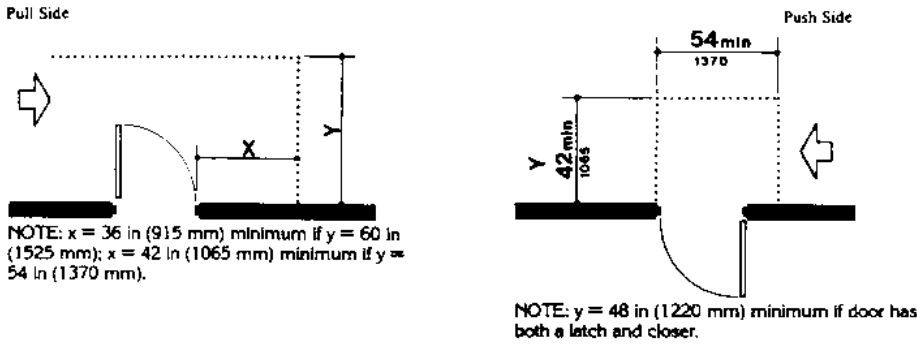
Is this texturing not used on any doors other than those that lead to hazardous areas?

Yes [] No [] N/A []

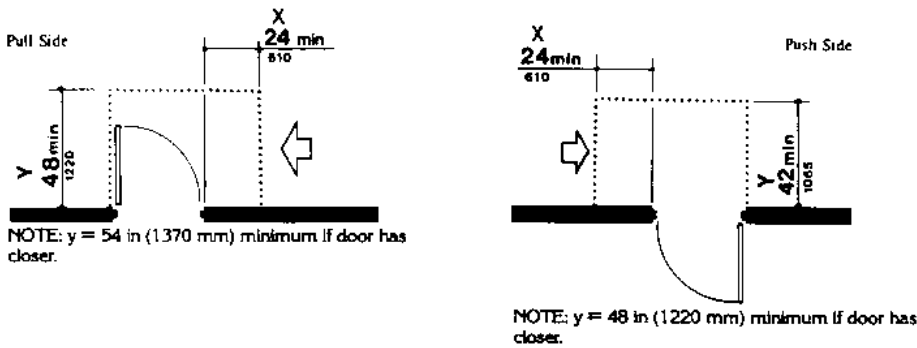
Survey Form 9: Doors and Gates (figures)



(a)
Front Approaches — Swinging Doors



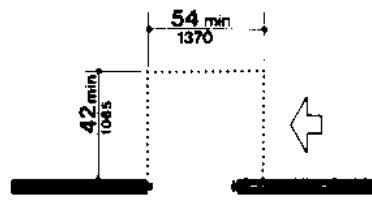
(b)
Hinge Side Approaches — Swinging Doors



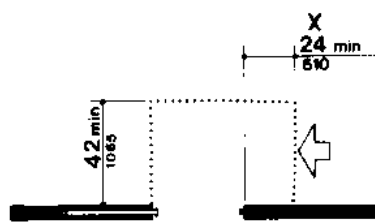
(c)
Latch Side Approaches — Swinging Doors



(d)
Front Approach — Sliding Doors
and Folding Doors



(e)
Slide Side Approach — Sliding Doors
and Folding Doors



(f)
Latch Side Approach — Sliding Doors and Folding Doors

NOTE: All doors in alcoves shall comply with the clearances for front approaches.

Fig. 25 Maneuvering Clearances at Doors

Survey Form 10: Building Lobbies and Corridors

Facility Name: _____

Lobby or Corridor Location: _____

4.3.10 If more than one means of egress is required by the fire code, is
4.1.2(7d) more than one accessible?

Yes [] No [] N/A []

OR

If only one means of egress in a multi-story building is accessible,
are safe areas of refuge provided on each floor?

Yes [] No [] N/A []

4.3.2(3) Is there an accessible route connecting the accessible entrance
with all accessible elements, spaces and dwelling units within the
building?

Yes [] No [] N/A []

4.3.3 Is the accessible route at least 36 inches wide except at doorways?

Yes [] No [] N/A []

Are doorways at least 32 inches in clear opening width?

Yes [] No [] N/A []

4.3.3 Where the accessible route makes a U-turn around an obstacle which
is less than 48 inches wide, does the pathway width increase to at
least 42 inches on the approach and 48 inches in the turn?

Yes [] No [] N/A []

4.3.4 If the accessible route is less than 60 inches wide, are there
passing spaces at least 60 inches wide and 60 inches long within
reasonable intervals not exceeding 200 feet?

Yes [] No [] N/A []

4.4.1 If objects mounted to the wall have bottom edges between 27 and 80
inches from the floor, do they project less than 4 inches into the
space? (Wall mounted objects with bottom edges below 27 inches may
project any amount so long as they do not reduce the required clear
width of an accessible route of travel.)

Yes [] No [] N/A []

Do free standing objects mounted on posts with bottom edges between
27 and 80 inches high project less than 12 inches into the route of
travel?

Yes [] No [] N/A []

Is there an accessible path of at least 36 inches clear alongside
the protruding object?

Yes [] No [] N/A []

4.4.2 Is there at least 80 inches clear head room?

Yes [] No [] N/A []

If there is less than 80 inches clear head room in an area adjoining
an accessible route, is there a barrier to warn visually-impaired
persons?

Yes [] No [] N/A []

Survey Form 10: Building Lobbies and Corridors (continued)

Is the barrier within 27 inches of the ground so that it is cane-detectable?

Yes [] No [] N/A []

4.5.1 Are the floors in all accessible areas and routes stable, firm, and slip-resistant?

Yes [] No [] N/A []

4.3.8, Are changes of level greater than 1/2 inch treated with a ramp?

4.5.2 Yes [] No [] N/A []

Are changes in level between 1/4 inch and 1/2 inch beveled with a slope no greater than 1:2?

Yes [] No [] N/A []

When floor materials change, does the vertical difference between them stay within these change of level requirements?

Yes [] No [] N/A []

4.5.3 If carpet or carpet tile is used on the floor, is it securely attached?

Yes [] No [] N/A []

Is it a level, low pile type of carpet with a firm pad or no pad at all underneath it?

Yes [] No [] N/A []

4.3.7 Is the slope of the route no greater than 1:20 except at ramps?

Yes [] No [] N/A []

Is the cross slope no greater than 1:50?

Yes [] No [] N/A []

4.13.2 If turnstiles or revolving doors are used on an accessible route, is there an accessible gate or door provided to facilitate the same use pattern?

Yes [] No [] N/A []

4.13.3 Do all gates including ticket gates meet all the applicable specifications for doors?

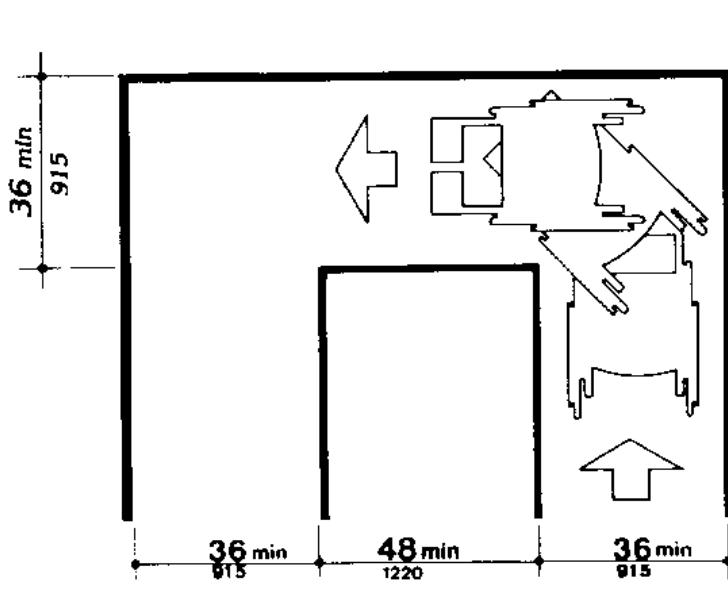
Yes [] No [] N/A []

4.1.1(7); On signs, do the letters and numbers have a width to height ratio between 3:5 and 1:1, and a stroke width-to-height ratio between 1:5 and 1:10?

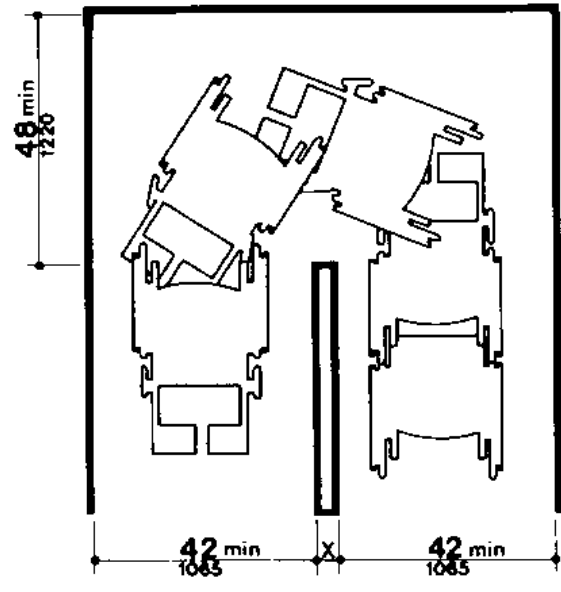
Yes [] No [] N/A []

4.30.3 Do the characters and symbols contrast with their background?

Yes [] No [] N/A []

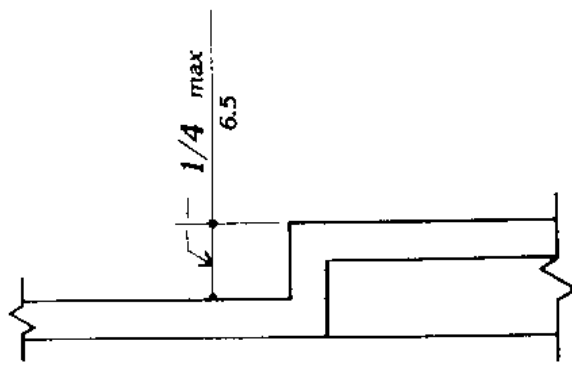


(a)
90° Turn

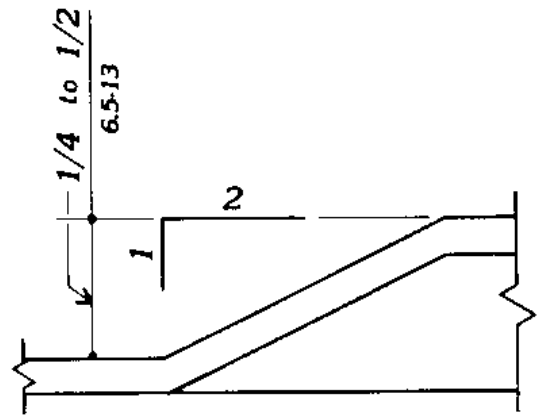


(b)
Turns around an Obstruction

NOTE: Dimensions shown apply when $x < 48$ in (1220 mm).



(c)
Changes in level



(d)
Changes in level

Fig. 7
Width of Accessible Route

Survey Form 11: Elevators

Facility Name: _____

Elevator Location: _____

Each elevator serving levels in a multi-story building or facility must comply with 4.10. Freight elevators are to be surveyed if the only elevators provided are combination passenger and freight elevators used by the public. (4.10.1)

Hallway Call Buttons:

4.10.3 Are the hallway call buttons centered at 42 inches above the floor?
Yes [] No [] N/A []

Are the call buttons at least 3/4 inches in the smallest dimension?
Yes [] No [] N/A []

Do they have visual signals to indicate when each call is registered and answered?
Yes [] No [] N/A []

Is the button designating the up direction above the down button?
Yes [] No [] N/A []

Are the buttons raised or flush with the wall?
Yes [] No [] N/A []

If there is an object below the buttons, does it project no more than 4 inches into the elevator lobby?
Yes [] No [] N/A []

4.10.4 Is there a visible and audible signal at each hoistway entrance to indicate which car is answering a call?
Yes [] No [] N/A []

Do audible signals sound once for up and twice for down, or do they have verbal annunciators that say "up" or "down"?
Yes [] No [] N/A []

Are the visual signals:

*mounted at least 72 inches above the floor?
Yes [] No [] N/A []

*at least 2-1/2 inches in the smallest dimension?
Yes [] No [] N/A []

*visible from the vicinity of the hall call button?
Yes [] No [] N/A []

Door Jamb and Threshold:

4.10.5 Does each elevator hoistway entrance have a raised floor designation on each door jamb centered 60 inches from the floor?
Yes [] No [] N/A []

Are these figures 2 inches tall?
Yes [] No [] N/A []

4.10.5; 4.30 Do the numbers on the floor designation sign have a width-to-height ratio between 3:5 and 1:1?
Yes [] No [] N/A []

Elevators: 1

Survey Form 11: Elevators (continued)

Do they have a stroke width-to-height ratio between 1:5 and 1:10?

Yes [] No [] N/A []

Does the color of the numbers contrast with the color of the background?

Yes [] No [] N/A []

Are the numbers raised at least 1/32 of an inch?

Yes [] No [] N/A []

Are the numbers in sans serif font?

Yes [] No [] N/A []

4.10.2 Does the floor of the elevator car come within 1/2 inch of the hallway floor at each stop?

Yes [] No [] N/A []

4.10.9 Is the horizontal gap between the car floor platform and the landing edge no greater than 1-1/4 inches?

Yes [] No [] N/A []

Doors:

4.10.6 Do the elevators doors open and close automatically?

Yes [] No [] N/A []

Do they re-open automatically without contact if they become obstructed?

Yes [] No [] N/A []

4.10.7 Is the time from when the elevator's arrival is signaled until the doors begin to close at least 5 seconds?

Yes [] No [] N/A []

If any hoistway door is further than 7.5 feet from the hall call button, does the time increase according to Figure 21?

Yes [] No [] N/A []

4.10.8 Do the elevators doors remain fully open for a minimum of 3 seconds?

Yes [] No [] N/A []

Elevator Floor:

4.10.9 Does the floor area of the car allow maneuvering room for wheelchair users to enter the car, reach the controls, and exit? (Figure 22)

Yes [] No [] N/A []

4.5.1 Are the floors in and adjacent to the elevator stable, firm, and slip-resistant?

Yes [] No [] N/A []

4.10.11 Is the illumination level at the car controls, the platform, and the car threshold and landing sill at least 5 footcandles?

Yes [] No [] N/A []

Elevator Control Panels:

4.10.12 Are the control buttons at least 3/4 inches in their smallest dimensions?

Yes [] No [] N/A []

Are the controls designated by raised characters or symbols at least 1/32 of an inch high placed immediately to the left of the buttons?

Yes []

No []

N/A []

Elevators: 2

Survey Form 11: Elevators (continued)

4.10.12; Do the raised characters have a width-to-height ratio between 3:5
4.30 and 1:1?

Yes [] No [] N/A []

Do they have a stroke width-to-height ratio between 1:5 and 1:10?

Yes [] No [] N/A []

Does the color of the numbers contrast with the color of the background?

Yes [] No [] N/A []

Are the raised numbers between 5/8 inch and 2 inches tall?

Yes [] No [] N/A []

Are the numbers in sans serif font?

Yes [] No [] N/A []

Is the button for the main entry floor designated by a raised star?

Yes [] No [] N/A []

4.10.12 Do the floor buttons have visual indications to show when each call is registered?

Yes [] No [] N/A []

Are the floor buttons no higher than 48 inches above the floor?

Yes [] No [] N/A []

Are the emergency buttons grouped at the bottom of the panel with centerlines no less than 35 inches above the floor?

Yes [] No [] N/A []

If the cars have central opening doors, are the controls located on a front wall?

Yes [] No [] N/A []

If the cars have side opening doors are the controls located on the side or front wall adjacent to the doors?

Yes [] No [] N/A []

4.10.13 Is there a visual car position indicator above the car control panel or over the door to indicate the floor level?

Yes [] No [] N/A []

Do the numerals illuminate and does an audible signal sound as the car passes or stops at a floor?

Yes [] No [] N/A []

Are the numerals at least 1/2 inch high?

Yes [] No [] N/A []

Emergency Communications:

4.10.14 Is there an emergency two-way communication system between the elevator and a point outside the hoistway?

Yes [] No [] N/A []

Is the communication system identified by a raised symbol or lettering?

Yes [] No [] N/A []

Is the highest operable part of a two-way communication system 48

inches above the floor or less?

Yes []

No []

N/A []

Elevators: 3

Survey Form 11: Elevators (continued)

If the system uses a handset, is the length of the cord from the panel to the handset least 29 inches?

Yes [] No [] N/A []

If the system is in a closed compartment, is the hardware on the compartment door operable with one hand, and does its operation not require tight grasping, pinching, or twisting of the wrist?

Yes [] No [] N/A []

Is the emergency intercommunication usable without voice communication?

Yes [] No [] N/A []

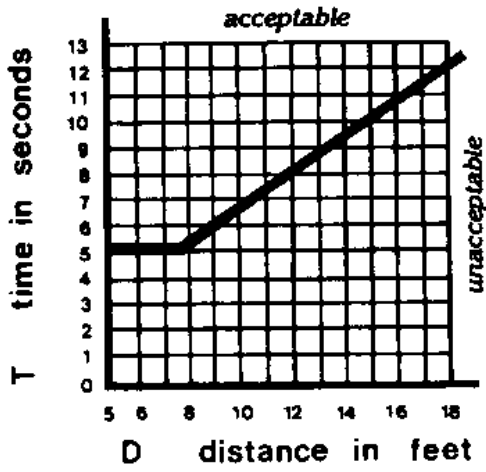
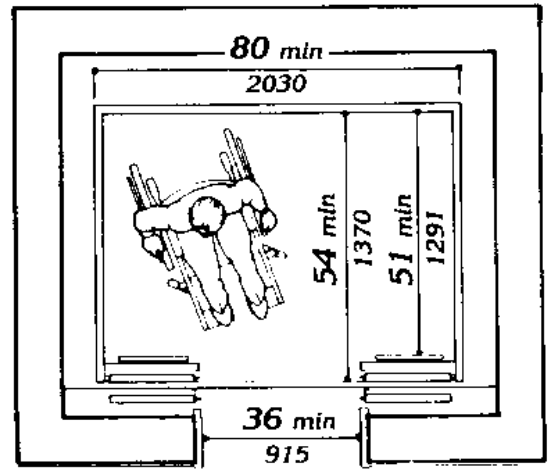
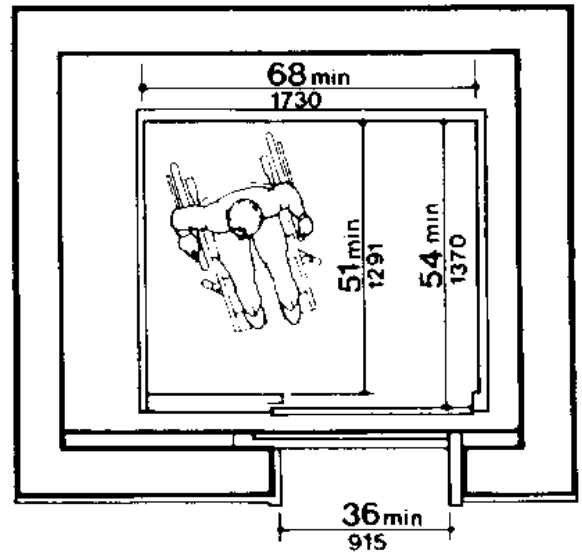


Fig. 21
Graph of Timing Equation



(a)



(b)

Fig. 22
Minimum Dimensions of Elevator Cars

Dimensions of Elevator Cars]

Survey Form 12: Rooms and Spaces

Facility Name: _____

Room or Space Location: _____

4.13 Do the doors comply with 4.13? (Use Survey Form 9: Doors and Gates to determine compliance).

Yes [] No [] N/A []

4.3.3 Are aisles at least 36 inches wide except at doors?

Yes [] No [] N/A []

Where the accessible pathway makes a U-turn around an obstacle which is less than 48 inches wide, does the pathway width increase to at least 42 inches on the approach and 48 inches in the turn?

Yes [] No [] N/A []

4.3.4 If the aisles are less than 60 inches wide, are there passing spaces at least 60 inches wide and 60 inches long within reasonable intervals not exceeding 200 feet?

Yes [] No [] N/A []

4.3.5 Is there at least 80 inches clear head room in the accessible space?

Yes [] No [] N/A []

If head room in part of an accessible space is less than 80 inches, is there a cane detectable barrier within 27 inches of the floor?

Yes [] No [] N/A []

4.4.1 If objects mounted to the wall have bottom edges between 27 and 80 inches from the floor, do they project less than 4 inches into the space? (Wall mounted objects with bottom edges below 27 inches may project any amount so long as they do not reduce the required clear width of an accessible route of travel.)

Yes [] No [] N/A []

Do free standing objects mounted on posts with bottom edges between 27 and 80 inches high project less than 12 inches into the route of travel?

Yes [] No [] N/A []

Is there an accessible path of at least 36 inches clear alongside the protruding object?

Yes [] No [] N/A []

4.5.1 Are the floors in all accessible rooms and spaces stable, firm, and slip-resistant?

Yes [] No [] N/A []

4.3.8; 4.5.2 Is any level change greater than 1/2 inch ramped?

Yes [] No [] N/A []

Are level changes between 1/4 inch and 1/2 inch beveled with a slope no greater than 1:2?

Yes [] No [] N/A []

Survey Form 12: Rooms and Spaces (continued)

When floor materials change, does the vertical difference between them meet these provisions?

Yes [] No [] N/A []

4.5.3 If carpet or carpet tile is used on the floor, is it securely attached?

Yes [] No [] N/A []

Is it a low pile type of carpet with a firm pad or no pad underneath it?

Yes [] No [] N/A []

Signage:

4.1.1(7); On room signs, do the letters and numbers have a width to height ratio between 3:5 and 1:1, and a stroke width-to-height ratio between 1:5 and 1:10?

Yes [] No [] N/A []

4.30.3 Does the color of the characters and symbols contrast with the color of the background?

Yes [] No [] N/A []

4.1.2(15); Do signs providing permanent identification of rooms and spaces have raised letters?

Yes [] No [] N/A []

Are they mounted on the wall at the latch side of the door between 54 and 66 inches above the floor?

Yes [] No [] N/A []

Are the characters sans serif?

Yes [] No [] N/A []

Are the characters and symbols on signs raised 1/32 inch?

Yes [] No [] N/A []

Are the raised characters or symbols between 5/8 inch and 2 inches tall?

Yes [] No [] N/A []

Storage:

4.25.2; Is there a clear floor space 30 x 48 inches at storage facilities which allows for either a forward or side approach in a wheelchair?

Yes [] No [] N/A []

4.25.3; If a side approach is provided, is there storage space between 9 and 54 inches from the floor?

Yes [] No [] N/A []

If a front approach is provided, is there storage space between 9 and 48 inches from the floor?

Yes [] No [] N/A []

Survey Form 12: Rooms and Spaces (continued)

Are clothes rods a maximum of 54 inches from the floor?

Yes [] No [] N/A []

4.13.5 Where passage is not required to access storage, does the door have at least 20 inches in clear opening width?

Yes [] No [] N/A []

4.25.4; 4.27.4 Is the hardware on the storage space doors operable with one hand?

Yes [] No [] N/A []

Is the hardware operable without tight grasping, pinching, or twisting of the wrist?

Yes [] No [] N/A []

Seating, Tables and Work Surfaces:

4.1.2(17) Do 5% (but not less than one) of the built-in or fixed seating tables and work surfaces meet the following requirements?

Yes [] No [] N/A []

4.32.2; 4.2.4 Do these seating spaces which are provided for people in wheelchairs have a 30 x 48 inch clear space which overlaps an accessible route?

Yes [] No [] N/A []

Is no more than 19 inches of the 30 x 48 inch clear space measured under the table?

Yes [] No [] N/A []

4.32.3 Is the knee space at least 27 inches high, 30 inches wide, and 19 inches deep?

Yes [] No [] N/A []

4.32.4 Is the top of the table or work surface between 28 and 34 inches from the floor?

Yes [] No [] N/A []

4.3.3 Are the aisles between tables at least 36 inches wide?

Yes [] No [] N/A []

Controls:

4.27.3 Are light switches, thermostatic controls, electrical receptacles and similar devices between 15 and 54 inches from the floor when the clear floor space allows a parallel approach?

Yes [] No [] N/A []

OR

Are they between 15 and 48 inches when the clear floor space allows only a forward approach?

Yes [] No [] N/A []

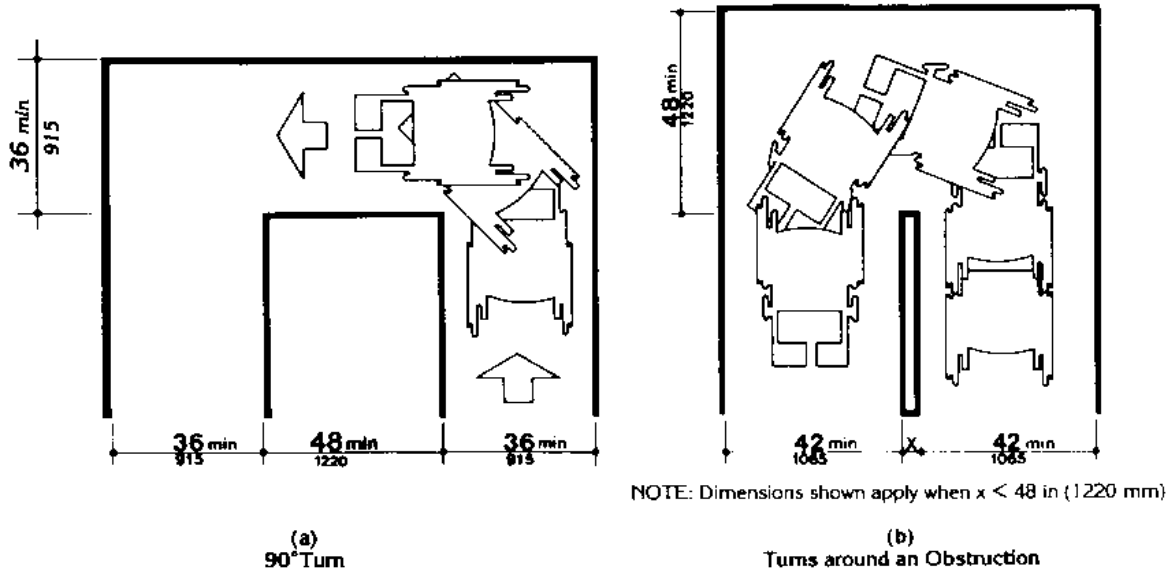
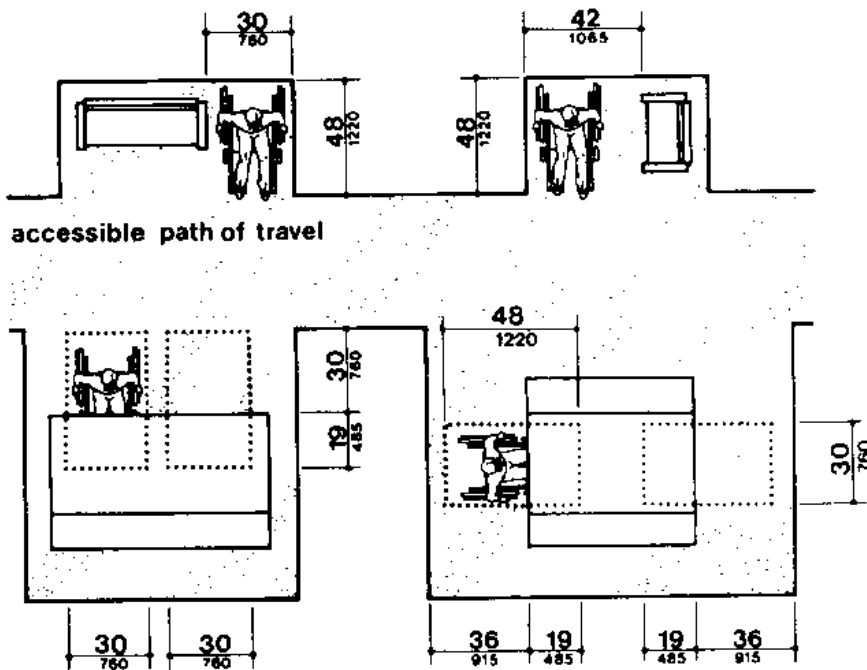


Fig. 7
Width of Accessible Route



for Seating and Tables]

Rooms and Spaces: 4

Survey Form 13: Assembly Rooms

Facility Name:

If places of assembly are provided, they shall comply with the following table:

Assembly Room Location:	Capacity of Seating and Assembly Ar.	Number of Required Wheelchair Locations
	50 to 75	3
	76 to 100	4
	101 to 150	5
	151 to 200	6
	201 to 300	7
	301 to 400	8
	401 to 500	9
	501 to 1,000	2% of total
	over 1,000	20 plus 1 for each 100 over 1,000

Use in conjunction with Form 12: Rooms and Spaces.

4.33.1; 4.1.2(18) Is the required number of wheelchair locations in assembly spaces provided?

Yes [] No [] N/A []

4.33.2 Is the space for 2 wheelchairs 66 inches wide? (Please note: There is no requirement that wheelchair spaces must be paired.)

Yes [] No [] N/A []

If people must wheel into the space from the side, are the spaces at least 60 inches deep?

Yes [] No [] N/A []

If people can wheel into the space from in front or behind the space, are the spaces 48 inches deep?

Yes [] No [] N/A []

4.33.3 Are the wheelchair seating spaces an integral part of the seating plan?

Yes [] No [] N/A []

Are they dispersed throughout the seating area? (Exception: Accessible viewing positions may be clustered for bleachers, balconies, and other areas having sight lines which require slopes greater than 5%.)

Yes [] No [] N/A []

Do they adjoin an accessible route that also serves as a means of egress in an emergency?

Yes [] No [] N/A []

Are the sightlines from these seating areas comparable to those for all viewing areas?

Yes [] No [] N/A []

4.33.4; 4.5 Are the floor surfaces at and around these seating areas level, stable, firm, and slip-resistant?

Yes [] No [] N/A []

Are level changes greater than 1/2 inch ramped?

Yes [] No [] N/A []

Assembly Rooms: 1

Survey Form 13: Assembly Rooms

Are level changes between 1/4 and 1/2 inch beveled with a maximum slope of 1:2?

Yes [] No [] N/A []

If carpet is used in the area, is it a low pile type with firm padding or no padding underneath it?

Yes [] No [] N/A []

Where floor materials change, is the vertical difference between them less than 1/4 inch?

Yes [] No [] N/A []

If the vertical difference is between 1/4 and 1/2 inch, is it beveled with a slope of 1:2 or less?

Yes [] No [] N/A []

4.33.5 Is there an accessible route connecting wheelchair seating locations and performance areas including stages, arena floors, dressing rooms, locker rooms, and other spaces used by performers?

Yes [] No [] N/A []

4.1.2 (18) If the assembly area has an audio-amplification system, is there a listening system for persons with severe hearing loss?

Yes [] No [] N/A []

If the area is used primarily as meeting or conference space or has no amplification system, is there a permanently installed or portable listening system?

Yes [] No [] N/A []

4.33.6 If the listening system serves individual fixed seats, are these seats located within a 50 foot viewing distance of the stage or playing area?

Yes [] No [] N/A []

Do these seats have a complete view of the stage or playing area?

Yes [] No [] N/A []

Survey Form 14: Toilet Rooms

Facility Name: _____

Toilet Room Location: _____

Each public and common use toilet room shall comply with 4.22. Other toilet rooms shall be adaptable. (4.1.2(10))

4.22.1 Are the toilet rooms located on an accessible route?
Yes [] No [] N/A []

4.22.3 Is there an unobstructed turning space (a 60 inch diameter circle or T-shaped space) in the toilet room?
Yes [] No [] N/A []

Doors to Toilet Room, Toilet Stalls, and to Storage:
(Survey each with Form 9: Doors and Gates.)

4.22.2 Does no door swing into a required clear floor space at an accessible fixture?
Yes [] No [] N/A []

Accessible Toilets:

4.16.2; 4.22.3 Is the centerline of the toilet 18 inches from a wall or partition which is prepared for the installation of a grab bar?
Yes [] No [] N/A []

If the toilet is approached from the front and there is a lavatory alongside the toilet, is there a clear floor space at least 48 inches wide by 66 inches long? (Figure 28)
Yes [] No [] N/A []

If the toilet is approached from the side and there is a lavatory alongside the toilet, is there a clear floor space at least 48 inches wide by 56 inches long?
Yes [] No [] N/A []

If there is provision for a side approach (no lavatory alongside the toilet) is there a clear floor space at least 60 inches wide by 56 inches long?
Yes [] No [] N/A []

4.16.3 Is the top of the toilet seat between 17 and 19 inches from the floor?
Yes [] No [] N/A []

Is the seat a type that does not automatically spring back to an open position?
Yes [] No [] N/A []

4.16.4 If the water closet is not located in a stall, is the back grab bar at least 36 inches long with one end mounted at least 12 inches from the centerline of the toilet?
Yes [] No [] N/A []

Is the side bar at least 42 inches long with the front end 54 inches from the back wall?
Yes [] No [] N/A []

Survey Form 14: Toilet Rooms (continued)

Are the grab bars mounted horizontally between 33 and 36 inches above the floor?

Yes [] No [] N/A []

4.16.4; Is the diameter of the grab bar between 1-1/4 inch and 1-1/2 inch?
4.26; 4.17.6

Yes [] No [] N/A []

OR

Does the shape provide an equivalent gripping surface?

Yes [] No [] N/A []

Is the space between the grab bar and the wall exactly 1-1/2 inches?

Yes [] No [] N/A []

Are the grab bars secured so that they do not rotate within their fittings?

Yes [] No [] N/A []

Is the grab bar and the wall adjacent to it free of any sharp or abrasive elements?

Yes [] No [] N/A []

4.16.5 Are flush controls automatic or operable with one hand?

Yes [] No [] N/A []

Are they mounted on the wide side of the toilet area?

Yes [] No [] N/A []

Are they no higher than 44 inches above the floor?

Yes [] No [] N/A []

4.16.5; Are the flush controls operable without tight grasping, pinching or
4.27 twisting of the wrist?

Yes [] No [] N/A []

Accessible Toilet Stalls:

4.17.1 Are the accessible toilet stalls on an accessible route?

Yes [] No [] N/A []

4.17.3 Does the size and arrangement of the accessible toilet stalls comply with the standard stall shown in Figure 30(a)? (Arrangements may be reversed. Alternate stalls are not permitted in new construction.)

Yes [] No [] N/A []

Is the stall at least 60 inches wide?

Yes [] No [] N/A []

If the toilet is wall mounted, is the stall at least 56 inches deep?

Yes [] No [] N/A []

If the toilet is a floor mounted model, is the stall at least 59 inches deep?

Yes [] No [] N/A []

Is the stall door located at the "open" side of the toilet?

Yes [] No [] N/A []

4.17.4 If the stall is less than 60 inches deep, does the front partition and at least one side partition have toe clearances of at least 9 inches above the floor?

Yes []

No []

N/A []

Toilet Rooms: 2

Survey Form 14: Toilet Rooms (continued)

4.17.5; When the stall door is open 90 degrees, is there a clear opening of
4.13 at least 32 inches measured between the face of the door and the
edge of the partition on the latch side?

Yes [] No [] N/A []

If the stall door swings into the stall, is there at least 36 inches
additional depth in the stall? (Figure 30(a-1))

Yes [] No [] N/A []

If the stall door swings out and the approach is from the latch
side, is the aisle approaching the stall at least 42 inch wide?

Yes [] No [] N/A []

OR

If the stall door swings out and the approach is from the hinge
side, is the aisle approaching the stall at least 48 inches wide?

Yes [] No [] N/A []

4.17.5; If the stall door opens out at the end of an aisle, is there at least
4.13 18 inches of maneuvering space at the latch side of the stall door?

Yes [] No [] N/A []

4.17.6 Are the grab bars placed as shown in Figure 30 a, a-1, c or d?

Yes [] No [] N/A []

4.16.6 Is the paper dispenser mounted no more than 36 inches from the back
wall and at least 19 inches from the floor so as to permit
unobstructed use of the grab bar?

Yes [] No [] N/A []

Does the dispenser not obstruct use of the grab bar?

Yes [] No [] N/A []

Does the dispenser allow continuous paper delivery?

Yes [] No [] N/A []

Urinals:

4.22.5 Where urinals are provided, does at least one meet the following
requirements?

Yes [] No [] N/A []

4.18.2 Is the urinal a stall type?

Yes [] No [] N/A []

OR

Is the urinal wall hung?

Yes [] No [] N/A []

Does the urinal have an elongated rim no more than 17 inches above
the floor?

Yes [] No [] N/A []

4.18.3 Is there a clear floor space 30 by 48 inches which allows a forward
approach to the urinal?

Yes [] No [] N/A []

Does the clear floor space adjoin or overlap an accessible route?

Yes [] No [] N/A []

If urinal shields are provided is there a minimum of 29 inches
between the two panels, and do they not extend beyond the front edge
of the urinal rim?

Yes []

No []

N/A []

Toilet Rooms: 3

Survey Form 14: Toilet Rooms (continued)

4.18.4; Are the flush controls automatic or operable with one hand without
4.27.4 tight grasping, pinching, or twisting of the wrist?

Yes [] No [] N/A []

Are the controls mounted no more than 44 inches above the floor?

Yes [] No [] N/A []

Lavatory:

4.22.6 Does at least one lavatory meet the following requirements?

Yes [] No [] N/A []

4.19.2 Is the lavatory rim or counter surface no higher than 34 inches
above the finished floor?

Yes [] No [] N/A []

Is there a clearance of at least 29 inches from the floor to the
bottom of the apron?

Yes [] No [] N/A []

Do the toe and knee clearances comply with Figure 31?

Yes [] No [] N/A []

4.19.3 Is there a clear floor space at least 30 by 48 inches in front of
the lavatory allowing a forward approach?

Yes [] No [] N/A []

Is not more than 19 inches of this clear floor space measured
underneath the lavatory?

Yes [] No [] N/A []

Does the clear floor space adjoin or overlap an accessible route?

Yes [] No [] N/A []

4.19.4 Are hot water pipes and drain pipes insulated or otherwise covered?

Yes [] No [] N/A []

Is the area below the lavatory free of sharp or abrasive surfaces?

Yes [] No [] N/A []

4.19.5; Can the faucet be operated with one hand without tight grasping,
4.27.4 pinching, or twisting of the wrist?

Yes [] No [] N/A []

If the valve is self closing, does it remain open for at least 10
seconds?

Yes [] No [] N/A []

Mirrors:

4.22.6; Does at least one mirror have a bottom edge of the reflecting
4.19.6 surface no higher than 40 inches from the floor?

Yes [] No [] N/A []

Dispensers:

4.22.7 Is at least one of each dispenser type accessible and on an
accessible route?

Yes [] No [] N/A []

Survey Form 14: Toilet Rooms (continued)

4.22.7; Is there a 30 x 48 inch clear space which allows either a forward or
4.27 a parallel approach to the dispensers?

Yes [] No [] N/A []

4.22.7; If a forward approach is provided, is the highest operable part no
4.27 higher than 48 inches?

Yes [] No [] N/A []

If a side approach is provided, is the highest operable part no
higher than 54 inches?

Yes [] No [] N/A []

Can the dispenser be operated with one hand without any tight
grasping, pinching, or twisting of the wrist?

Yes [] No [] N/A []

Medicine Cabinet:

4.23.9 If medicine cabinets are provided, does at least one have a usable
shelf no higher than 44 inches from the floor?

Yes [] No [] N/A []

Storage:

4.25.2 Is there a clear floor space 30 x 48 inches at storage facilities
which allows for either a forward or side approach in a wheelchair?

Yes [] No [] N/A []

4.25.3 If a side approach is provided, is there storage space between 9
and 54 inches from the floor?

Yes [] No [] N/A []

If a front approach is provided, is there storage space between 9
and 48 inches from the floor?

Yes [] No [] N/A []

Survey Form 14: Toilet Rooms (figures)

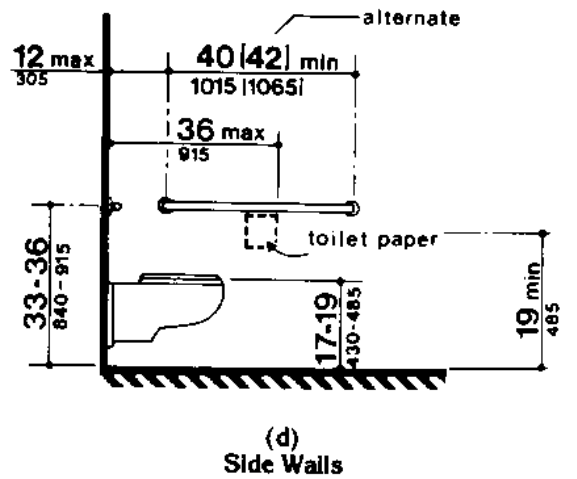
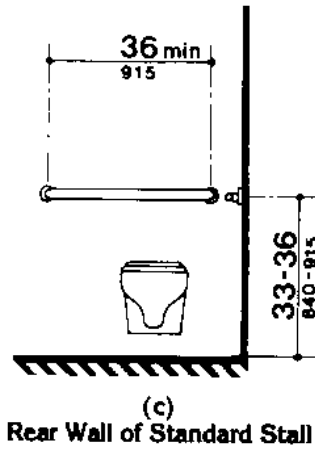
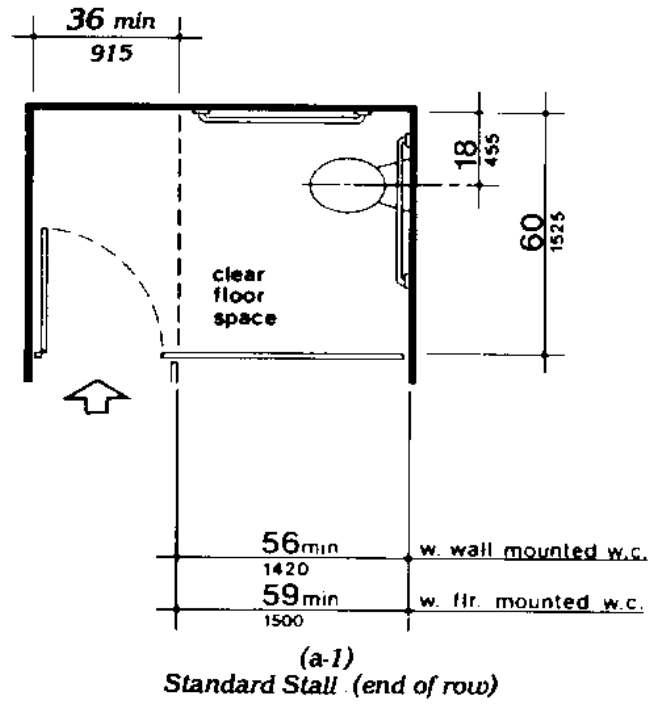
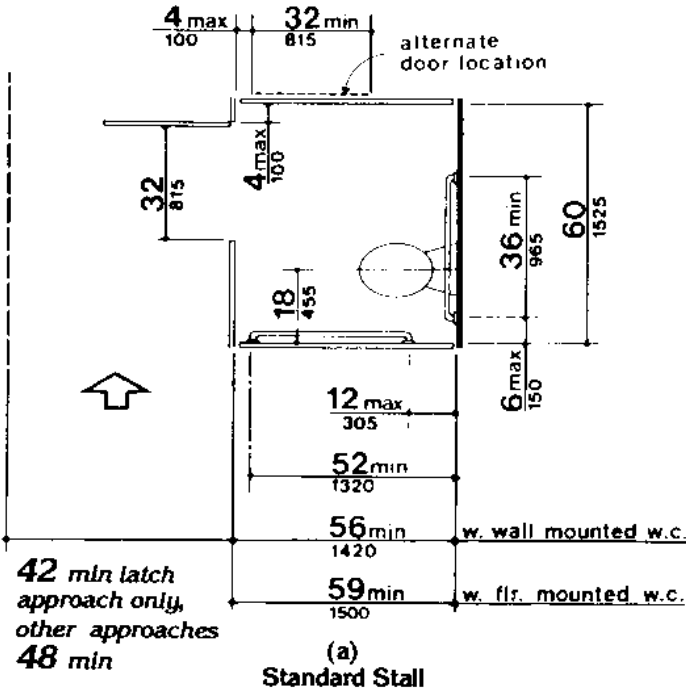
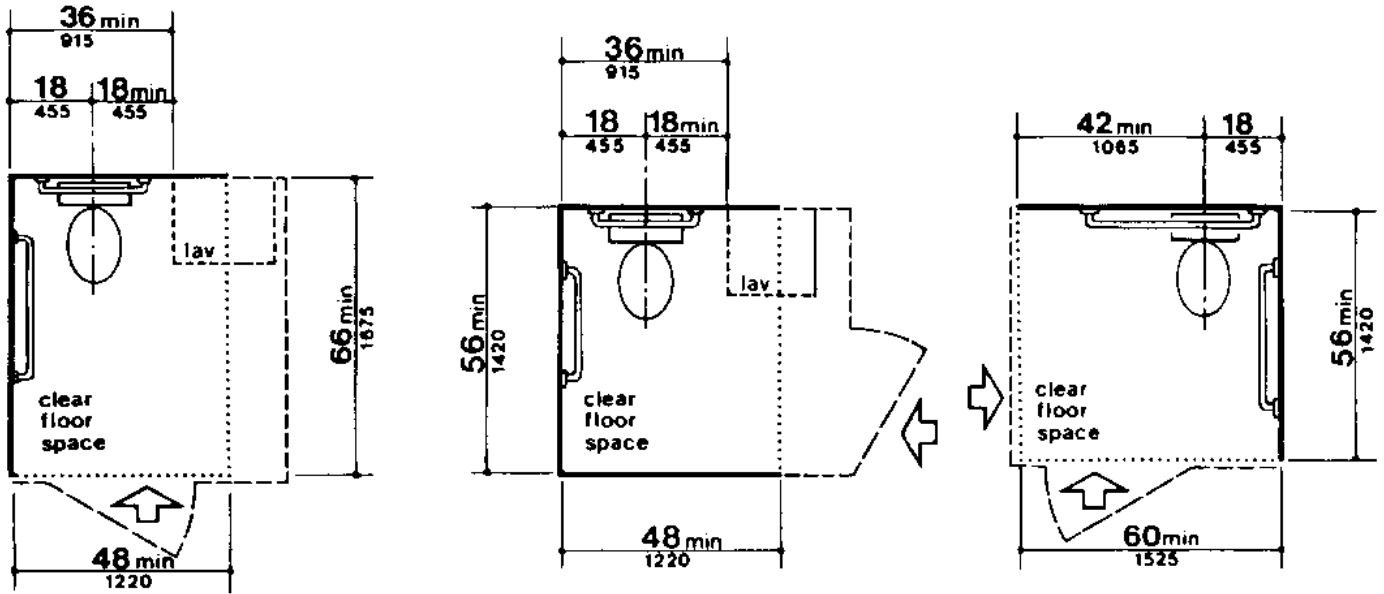


Fig. 30 Toilet Stalls

Survey Form 14: Toilet Rooms (figures)



Possible wall locations - - - - -

Fig. 28
Clear Floor Space at Water Closets

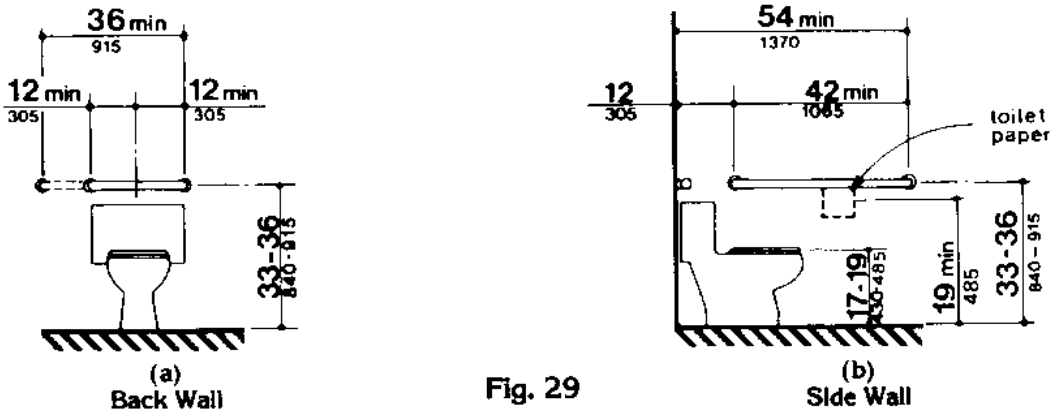


Fig. 29
Grab Bars at Water Closets

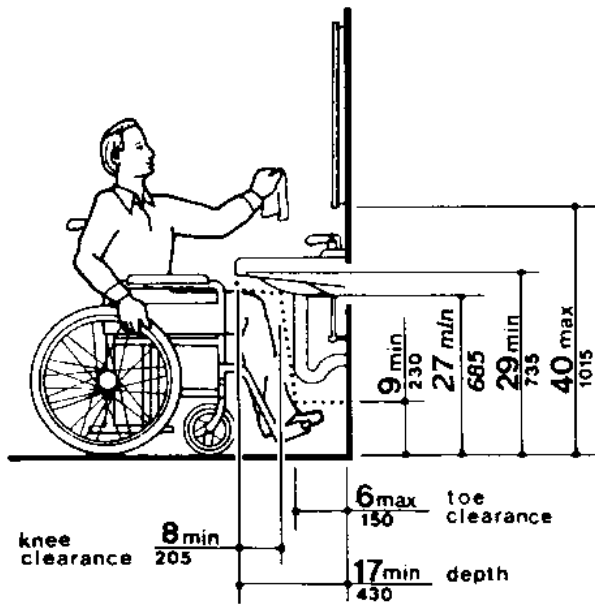


Fig. 31
Lavatory Clearances

Bars at Water Closets & Lavatory Clearances]

Toilet Rooms: 7

Survey Form 15: Bathtubs And Showers

Each public and common use bathroom shall comply with 4.23.

Facility Name: _____

Bathroom Location: _____

4.23.1 Are the accessible bathing facilities on an accessible route?
Yes [] No [] N/A []

Bathtubs:

4.23.8 Where bathtubs are provided, does at least one meet the following requirements?
Yes [] No [] N/A []

4.20.2 Does the clear floor space which depends on the direction of approach comply with Figure 33?
Yes [] No [] N/A []

4.20.3 Is an in-tub seat or a seat at the head of the tub provided?
Yes [] No [] N/A []

Is the seat mounted securely so that it will not slip during use?
Yes [] No [] N/A []

4.20.4 Are grab bars provided as shown in Figures 33 and 34?
Yes [] No [] N/A []

4.20.4; 4.26 Is the diameter of the grab bar between 1-1/4 inches and 1-1/2 inches?
Yes [] No [] N/A []

OR

Does the shape provide an equivalent gripping surface?
Yes [] No [] N/A []

Is the space between the grab bar and the wall exactly 1-1/2 inch?
Yes [] No [] N/A []

Is the grab bar secured so that it does not rotate within the fittings?
Yes [] No [] N/A []

Is the grab bar and the wall adjacent to it free of any sharp or abrasive elements?
Yes [] No [] N/A []

4.20.5; 4.27 Can faucets and other controls be operated with one hand without any tight grasping, pinching, or twisting of the wrist?
Yes [] No [] N/A []

4.20.5 Are they located within the area shown in Figure 34?
Yes [] No [] N/A []

4.20.6 Is there a shower spray unit with a hose at least 60 inches long?
Yes [] No [] N/A []

Can the shower spray unit be both hand held and fixed to the wall?
Yes [] No [] N/A []

Survey Form 15: Bathtubs and Showers (continued)

4.20.7 If provided, are bathtub enclosures located so that they do not obstruct the controls or transfer from a wheelchair onto the bathtub seat?

Yes [] No [] N/A []

If the enclosure is mounted on the bathtub, is there no track mounted on the rim?

Yes [] No [] N/A []

Showers:

4.23.8 Where showers are provided, is at least one made accessible by meeting the provisions below?

Yes [] No [] N/A []

4.21.2 Does the shower stall size and clear floor space comply with either Figure 35(a) for a transfer type shower or 35(b) for a roll-in shower?

Yes [] No [] N/A []

Transfer Type Shower as shown in Figure 35(a):

4.21.3 If the shower stall is the type shown in Figure 35(a), is it exactly 36 x 36 inches?

Yes [] No [] N/A []

Is there a clear floor space 36 x 48 inches outside the stall with 12 inches extending beyond the seat wall? (Fig. 35(a))

Yes [] No [] N/A []

Is there a seat mounted between 17 and 19 inches from the floor?

Yes [] No [] N/A []

Does the seat extend the full depth of the stall?

Yes [] No [] N/A []

Is the seat on the wall opposite the controls?

Yes [] No [] N/A []

4.21.4 Are grab bars provided along the control wall and half the back wall, but not behind the seat?

Yes [] No [] N/A []

4.21.7 If curbs are provided, are they no higher than 1/2 inch?

Yes [] No [] N/A []

4.21.8 If provided, is a shower stall enclosure located so that it does not obstruct the controls or prohibit transfer from the wheelchair onto the shower seat?

Yes [] No [] N/A []

4.21.5 Are the controls located within the area shown in Figure 37(a)?

Yes [] No [] N/A []

4.21.4 Are grab bars provided as shown in Figure 37(a)?

Yes [] No [] N/A []

Roll-in Type Shower as shown in Figure 35(b):

4.21.2 Is the roll-in shower at least 30 x 60 inches as shown in Figure 35(b)?

Yes [] No [] N/A []

Survey Form 15: Bathtubs and Showers (continued)

Is there a 36 x 60 inch clear floor space alongside the shower as shown in Figure 35(b)?

Yes [] No [] N/A []

4.21.4 Does a grab bar extend around three sides as shown in Figure 35(b) and Figure 37(b)?

Yes [] No [] N/A []

4.21.7 Is there no curb at all in the roll-in shower?

Yes [] No [] N/A []

4.21.5 Are the controls located on the end wall within the area shown in Figure 37(b)?

Yes [] No [] N/A []

Both Types of Shower:

4.21.4; Is the diameter of the grab bar between 1-1/4 inch and 1-1/2 inch?

4.26 Yes [] No [] N/A []

OR

Does the shape provide an equivalent gripping surface?

Yes [] No [] N/A []

Is the space between the grab bars and the wall exactly 1-1/2 inches?

Yes [] No [] N/A []

Is the grab bar secured so that it does not rotate within the fittings?

Yes [] No [] N/A []

Is the grab bar and the wall adjacent to it free of any sharp or abrasive elements?

Yes [] No [] N/A []

4.21.5; 4.27.4 Can the controls be operated with one hand without tight grasping, pinching, or twisting of the wrist?

Yes [] No [] N/A []

4.21.6 Does the shower spray unit have a hose at least 60 inches long?

Yes [] No [] N/A []

Can the shower spray unit be both hand held and fixed to the wall?

Yes [] No [] N/A []

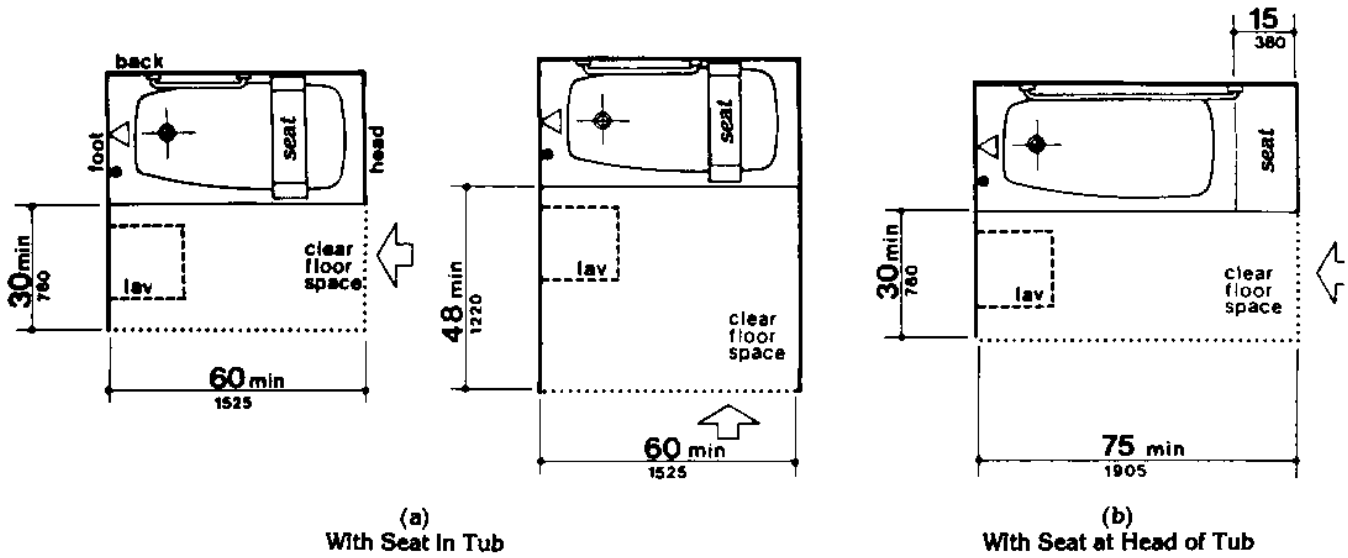


Fig. 33
Clear Floor Space at Bathtubs

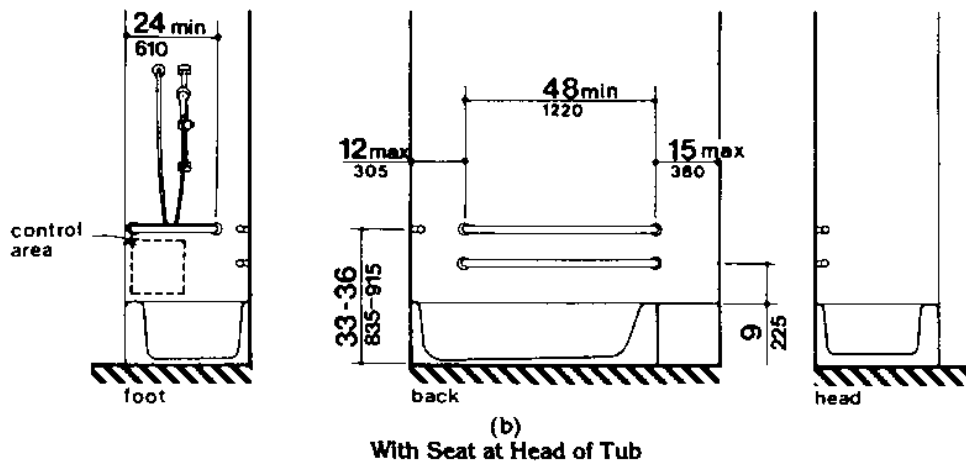
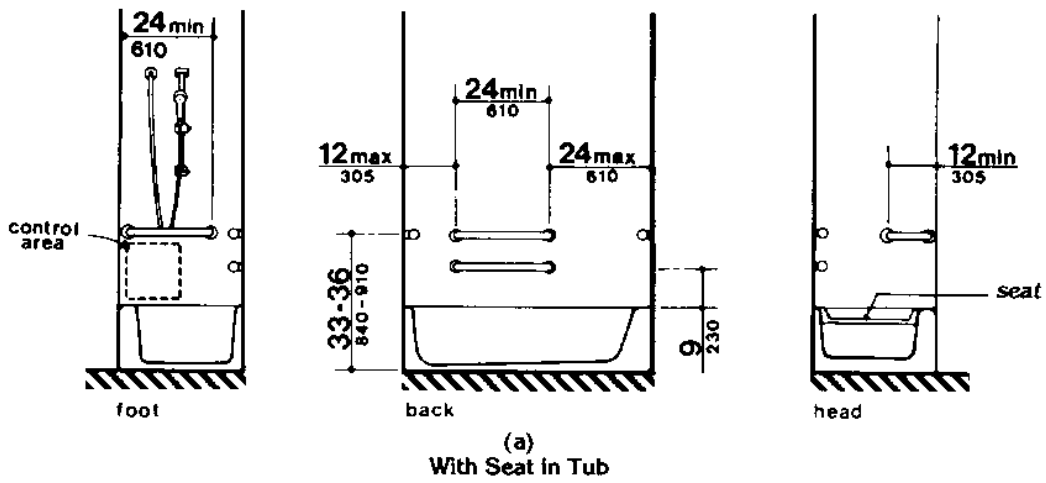
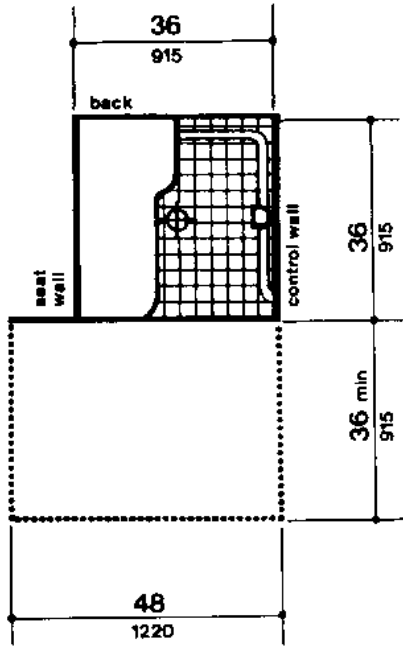
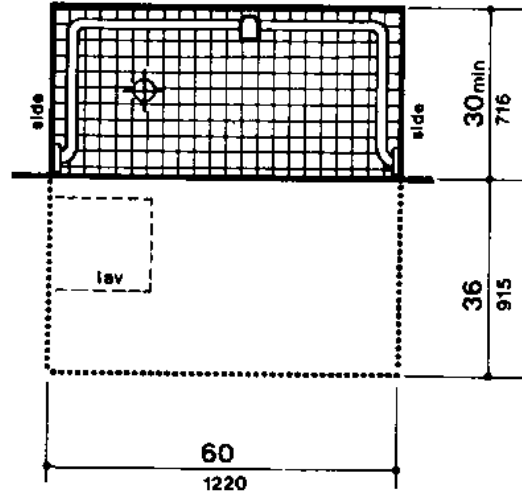


Fig. 34
Grab Bars at Bathtubs

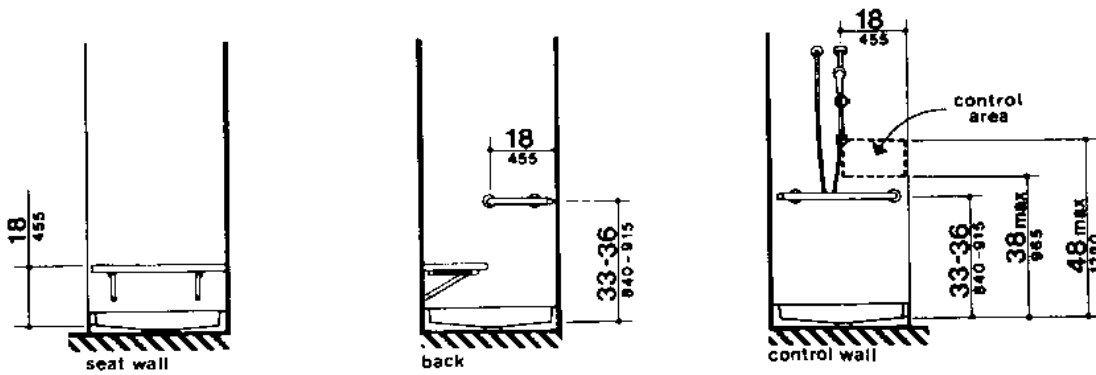


(a)
36-in by 36-in
(915-mm by 915-mm) Stall

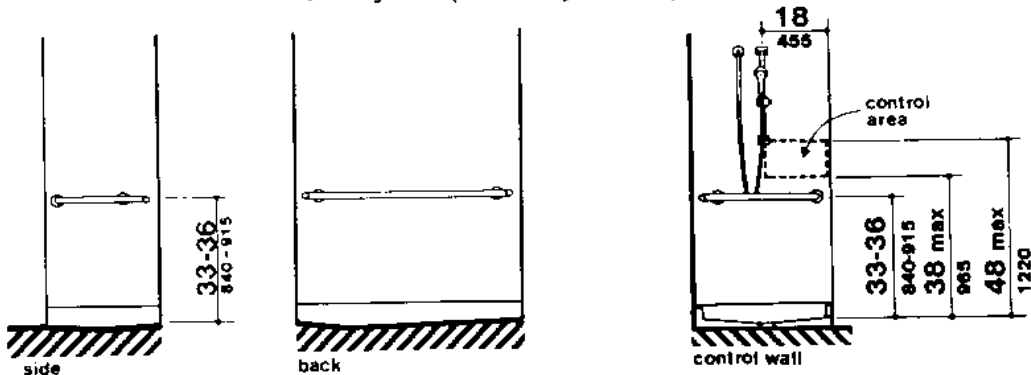


(b)
30-in by 60-in
(760-mm by 1525-mm) Stall

Fig. 35
Shower Size and Clearances



(a)
36-in by 36-in (915-mm by 915-mm) Stall



(b)
30-in by 60-in (760-mm by 1525-mm) Stall

Fig. 37
Grab Bars at Shower Stalls

Survey Form 16: Restaurants and Cafeterias

Restaurant Name: _____

Use Forms 1 to 15 as they apply. In addition to other applicable sections, restaurants and cafeterias must comply with the following requirements.

5.1; 4.3.3 Are all aisles between fixed tables at least 36 inches wide except at doors?
Yes [] No [] N/A []

5.1 Where practical, are accessible tables distributed throughout the space or facility?
Yes [] No [] N/A []

Where there are mezzanine levels, loggias or raised platforms, are the same services and decorative character provided elsewhere in spaces located on accessible routes?
Yes [] No [] N/A []

Food Service Lines:

5.2 Do food service lines have a clear width of 36 inches or more?
Yes [] No [] N/A []

Are tray slides no more than 34 inches above the floor?
Yes [] No [] N/A []

If self-service shelves are provided, are they no more than 54 inches above the floor?
Yes [] No [] N/A []

Seating and Tables:

5.1 Do at least 5 % of all fixed seats or tables meet the following requirements?
Yes [] No [] N/A []

4.32.2; 4.2.4 Do seating spaces provided for people in wheelchairs have a 30 x 48 inch clear floor space which overlaps an accessible route?
Yes [] No [] N/A []

Is no more than 19 inches of the 30 x 48 inch clear space measured under the table? (Figure 45)
Yes [] No [] N/A []

4.32.3 Is the knee space at least 27 inches high, 30 inches wide, and 19 inches deep? (Figure 45)
Yes [] No [] N/A []

4.32.4 Is the top of the table between 28 and 34 inches from the floor or ground?
Yes [] No [] N/A []

Vending Machines:

5.4; 4.27 Is there a 30 x 48 inch clear space at the vending machine which allows either a forward or a parallel approach?
Yes [] No [] N/A []

Survey Form 16: Restaurants and Cafeterias (continued)

If a forward approach is provided, are the operating parts of the machine including coin slots between 15 and 48 inches from the floor?

Yes [] No [] N/A []

If a parallel approach is provided, are the operating parts of the machine including the coin slots between 9 and 54 inches from the floor?

Yes [] No [] N/A []

Are they operable with one hand?

Yes [] No [] N/A []

Are they operable without tight grasping, pinching, or twisting of the wrist?

Yes [] No [] N/A []

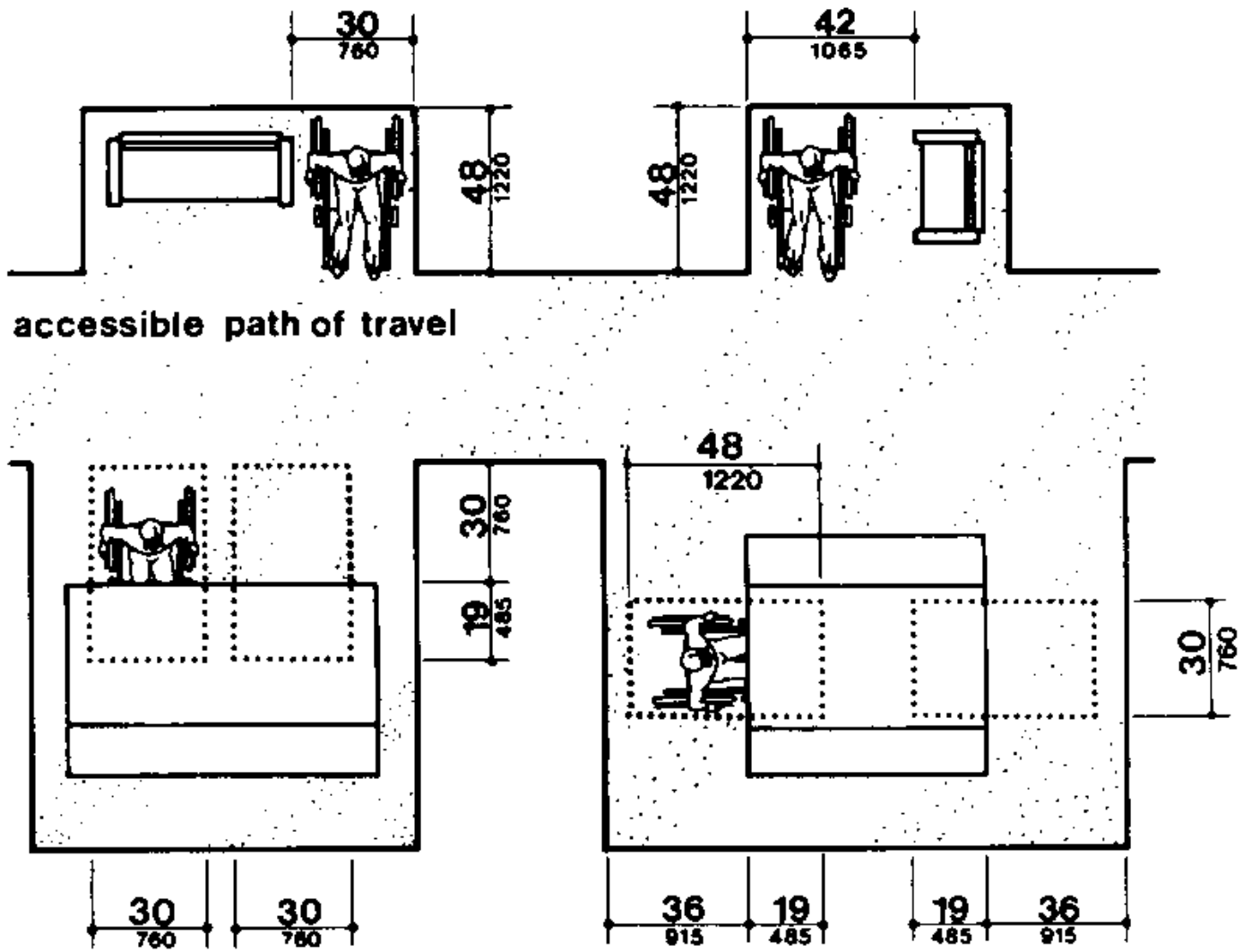


Fig. 45
Minimum Clearances for Seating and Tables

Survey Form 17: Health Care

Facility Name: _____

(For Health Care Facilities, use this Form and Forms 1-15 as they apply. In addition to other applicable sections, health care buildings and facilities shall comply with the following.)

4.1.4 Are accessible rooms complying with the provisions below provided in the percentages shown on the Occupancy Classification Chart?
Yes [] No [] N/A []

6.2 Is there at least one accessible entrance covered by a canopy or overhang?
Yes [] No [] N/A []

Does a passenger loading zone exist at this entrance?
Yes [] No [] N/A []

6.3(1); 4.2.3 In a patient bedroom, is there a circle of clear space 60 inches in diameter, or a T-shaped space in which a 180 degree turn can be made?
Yes [] No [] N/A []

Bedrooms:

6.3(2,3,4) One Person Bedroom:

In a single occupancy room, is there at least 36 inches clear space along each side of the bed?
Yes [] No [] N/A []

Is there at least 42 inches clear space between the foot of the bed and the wall?
Yes [] No [] N/A []

Two Person Bedroom:

In a double occupancy room, is there at least 48 inches clear space between the two beds?
Yes [] No [] N/A []

Is there at least 42 inches between the foot of the bed and the wall?
Yes [] No [] N/A []

Is there 36 inches between the side of each bed and the wall?
Yes [] No [] N/A []

Four Person Bedroom:

In a quadruple occupancy room, is there at least 48 inches clear between the foot of one bed and the foot of another bed?
Yes [] No [] N/A []

Is there at least 36 inches between the side of a bed and the wall?
Yes [] No [] N/A []

Is there at least 48 inches between two beds?
Yes [] No [] N/A []

6.4 Is the patient's toilet room accessible? (Use Survey Forms 14 and 15 to confirm this accessibility.)
Yes [] No [] N/A []

Survey Form 18: Mercantile

Facility Name: _____

Use this form in conjunction with Survey Forms 1-15 as they apply. In addition to requirements of 4.1 to 4.33, all areas for business transactions must comply with the following.

7.2 If there is a service or distribution counter over 36 inches high, is there an adjacent counter no higher than 34 inches?
Yes [] No [] N/A []

7.3; 4.2.1 Is there at least one accessible check out aisle which is at least 36 inches wide with adjoining counters at a maximum height of 36 inches?
Yes [] No [] N/A []

7.4 If there is a preventive method for keeping shopping carts on the premises, does this allow the entrance and exit of persons in wheelchairs? (An alternate entry that is equally convenient is acceptable.)
Yes [] No [] N/A []

Mercantile: 1

Survey Form 19: Libraries

Library Name: _____

Use Forms 1-11 to survey spaces up to the library itself and Form 14 for the bathrooms. Use this form to survey all public areas of the library. In addition to the requirements of 4.1 to 4.33, libraries must comply with the following.

Reading and Study Areas:

8.2 Are at least 5% or a minimum of one of each element of fixed seating, tables, or study carrels accessible to people in wheelchairs?

Yes [] No [] N/A []

4.32.2; 4.2.4 Do seating spaces provided for people in wheelchairs have a 30 x 48 inch clear floor space which overlaps an accessible route?

Yes [] No [] N/A []

Is no more than 19 inches of the 30 x 48 inch clear space measured under the table? (Figure 45)

Yes [] No [] N/A []

4.32.3 Is the knee space at least 27 inches high, 30 inches wide, and 19 inches deep? (Figure 45)

Yes [] No [] N/A []

4.32.4 Is the top of the table between 28 and 34 inches from the floor or ground?

Yes [] No [] N/A []

4.3.3 Are all aisles including those between tables at least 36 inches wide except at doors?

Yes [] No [] N/A []

Where the accessible pathway makes a U-turn around an obstacle which is less than 48 inches wide, does the pathway width increase to at least 42 inches on the approach and 48 inches in the turn? (Figure 7b)

Yes [] No [] N/A []

4.3.4 If the circulation space is less than 60 inches wide, are there passing spaces at least 60 inches wide and 60 inches long within reasonable intervals not exceeding 200 feet?

Yes [] No [] N/A []

4.3.5 Is there at least 80 inches clear head room in the accessible space?

Yes [] No [] N/A []

If head room next to an accessible space is less than 80 inches, is there a cane detectable barrier within 27 inches of the ground?

Yes [] No [] N/A []

Are fixed elements spaced at least 36 inches apart?

Yes [] No [] N/A []

Survey Form 19: Libraries (continued)

Check-Out Areas:

8.3; 4.2.4 Is at least one lane at each check out area usable by people in wheelchairs?

Yes [] No [] N/A []

8.3; 4.13 Next to any turnstile, is there an accessible gate or door?

Yes [] No [] N/A []

4.13 Do all doors and gate comply with 4.13? (Use Survey Form 9: Doors and Gates to verify compliance.)

Yes [] No [] N/A []

Card Catalogs:

8.4 Is the aisle between the card catalogs at least 36 inches wide?

Yes [] No [] N/A []

Are the card catalogs between 18 and 54 inches from the floor?

Yes [] No [] N/A []

Stacks:

8.5; 4.3 Is the minimum clear width between the stacks 36 inches?

Yes [] No [] N/A []

Libraries: 2

Survey Form 20: Postal Facilities

Facility Name: _____

Use this Form in conjunction with Forms 1-15 as they apply. In addition to the requirements of 4.1 to 4.33, U.S. Postal Facilities must comply with the following.

Service Counters:

9.2 Are passageways in front of customer service counters at least 48 inches wide?

Yes [] No [] N/A []

Writing Tables or Desks:

9.2; 4.32 Where writing desks or tables are provided, is the top of at least one writing surface between 28 and 34 inches from the floor?

Yes [] No [] N/A []

Does it have clear space as shown in Figure 45?

Yes [] No [] N/A []

Self-service Postal Centers:

9.3; 4.2 Are parcel post depositories, stamp vending machines, multi-commodity vending machines and currency-coin changing machines installed next to a 30 x 48 inch clear space which allows a parallel approach to the service?

Yes [] No [] N/A []

Is the highest operable part of the these services within 54 inches of the floor?

Yes [] No [] N/A []

Letter Drop:

9.2; 4.2 Is there a 30 x 48 inch clear space in front of each letter drop which allows either a forward or a parallel approach?

Yes [] No [] N/A []

If a forward approach is provided, are the operable parts of the letter drops a maximum of 48 inches above the floor?

Yes [] No [] N/A []

If a side approach is provided, are the operable parts of the letter drop a maximum of 54 inches above the floor?

Yes [] No [] N/A []

9.2(1) Are all fixed structures stable when you bump into them or lean on them?

Yes [] No [] N/A []

Are the walls that support handrails stable when you pull on the handrail?

Yes [] No [] N/A []

Survey Form 20: Postal Facilities (continued)

Post Office Boxes:

9.4 Are at least 5% of the Post Office Boxes located in the second or third module from the floor at a height between 12 and 36 inches?
Yes [] No [] N/A []

Are the aisles between the post office boxes a minimum of 66 inches wide?
Yes [] No [] N/A []

Locker Rooms:

9.5 Are persons in wheelchairs assigned bottom lockers?
Yes [] No [] N/A []

If the lockers are full length, are all latches, hooks, etc. a maximum of 48 inches above the ground?
Yes [] No [] N/A []

Is there a minimum of 42 inches of unobstructed aisle space in front of the lockers?
Yes [] No [] N/A []

Attendance-Recording Equipment:

9.6 Are all time clocks, card racks, log books, and other attendance-recording equipment 48 inches or less above the floor?
Yes [] No [] N/A []

At the check-in areas, is the counter space 36 inches or less above the floor?
Yes [] No [] N/A []

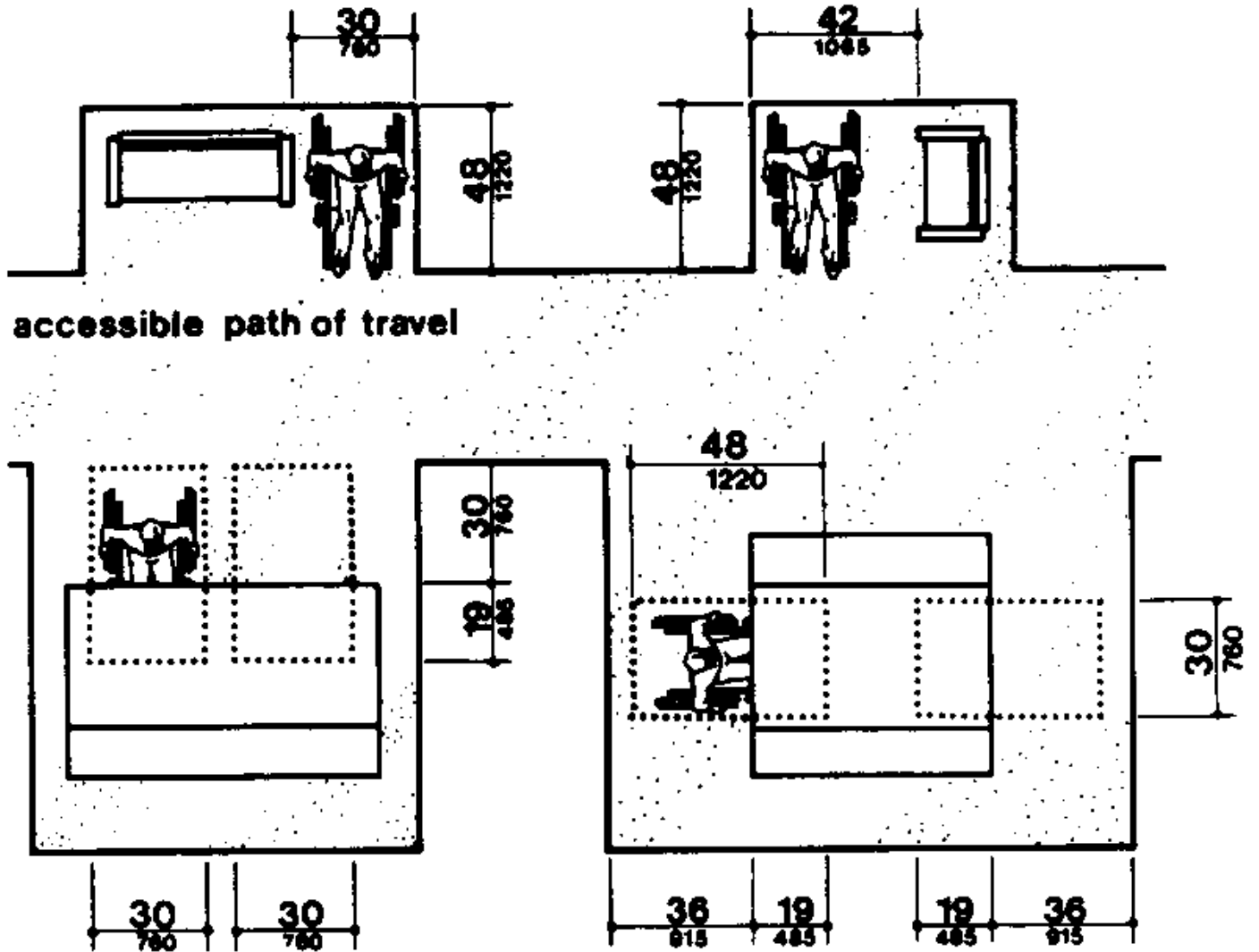


Fig. 45
Minimum Clearances for Seating and Tables

Survey Form 21: Dwelling Units

Begin with this survey form. Where another survey form is needed, it will be referenced in the checklist. Accessible housing shall comply with the requirements of 4.1 and 4.34 except as noted below. (See 4.1)

Approach to Accessibility:

4.34.3 Are the accessible dwelling units designed for permanent accessibility or adaptability?
Yes [] No [] N/A []

4.34.4 If they are designed for adaptability, is consumer information provided in each adaptable dwelling unit available for occupancy? (See Appendix for a list of the necessary information.)
Yes [] No [] N/A []

Site:

4.1.1(d) If parking is provided for all residents, is one accessible parking space provided for each accessible dwelling unit?
Yes [] No [] N/A []

If parking is provided for only a portion of the residents, is an accessible parking space provided upon request of an occupant of an accessible dwelling unit?
Yes [] No [] N/A []

If parking is provided for visitors, are 2% of the spaces but not less than one space accessible?
Yes [] No [] N/A []

(Use Survey Form 1: Parking to determine whether or not these spaces have the necessary features.)

Entrance:

4.1.3(2) Are entrances complying with 4.14 provided as necessary to achieve access to and egress from the buildings and facilities? (Exception: In projects consisting of one-to-four dwelling units where accessible entrances would be extraordinarily costly due to site conditions or local code restrictions, accessible entrances are required only to those buildings containing accessible dwelling units.)
Yes [] No [] N/A []

Use Survey Forms 5-9 as they apply to determine whether or not these entrances have the necessary features.

Common Spaces:

4.1.3(3) Is at least one of each type of common space accessible?
Yes [] No [] N/A []

Use Survey Form 12: Rooms and Spaces to determine compliance.

Survey Form 21: Dwelling Units (continued)

Are the accessible common spaces and dwelling units connected by an accessible route?

Yes [] No [] N/A []

Use survey Forms 5-7, 9 and 10 as they apply to determine whether or not these accessible routes have the necessary features.

4.34.2(1) Do common spaces and facilities serving individual accessible dwelling units (for example, entry walks, trash disposal facilities and mail boxes) comply with 4.2 through 4.33?

Yes [] No [] N/A []

Check each of these spaces with Form 12 plus answer these additional questions:

Mailboxes:

4.2 Is there a clear floor space at least 30 x 48 inches which allows either a front or a parallel approach to the mailboxes?

Yes [] No [] N/A []

If a front approach is provided, is the mailbox no higher than 48 inches from the ground?

Yes [] No [] N/A []

If a parallel approach is provided, is the mailbox no higher than 54 inches from the ground?

Yes [] No [] N/A []

4.27 Can the mailbox be opened with only one hand?

Yes [] No [] N/A []

Does opening and closing the mailbox not require tight grasping, pinching or twisting of the wrist?

Yes [] No [] N/A []

4.2.3 If a turn must be made to exit the mail box area, is there a circle of clear space 60 inches in diameter, or a T shaped space in which a 180 degree turn can be made?

Yes [] No [] N/A []

Common Laundry Spaces Serving one or more Accessible Dwelling Unit:

4.34.7.1 Are common laundry spaces which serve one or more accessible dwelling units on an accessible route?

Yes [] No [] N/A []

4.34.7.2 Are washing machines and clothes dryers front loading?

Yes [] No [] N/A []

4.34.7.3; 4.27 Is a 30 x 48 inch clear floor space provided at the machines which allows either a forward or parallel approach?

Yes [] No [] N/A []

If a forward approach is provided, is the highest operable part of the machine no more than 48 inches from the floor?

Yes [] No [] N/A []

Survey Form 21: Dwelling Units (continued)

If a parallel approach is provided, is the highest operable part of the machine no more than 54 inches from the floor?

Yes [] No [] N/A []

Are the machine controls operable with one hand?

Yes [] No [] N/A []

Do they not require any tight grasping, pinching, or twisting of the wrist?

Yes [] No [] N/A []

4.2.3 Is there a 60 x 60 inch or T-shaped turning space so that tenants can adjust their position at the machines and turn to exit the laundry space?

Yes [] No [] N/A []

Dwelling Unit:

4.34.2 Is the dwelling unit located on an accessible route?

Yes [] No [] N/A []

4.34.2(7) Does at least one entrance to the dwelling unit comply with 4.14?

Yes [] No [] N/A []

Use Survey Forms 5-10 as they apply to determine whether or not there is an accessible route and if the entrance has the necessary features.

4.34.2(15) Are the living and dining areas accessible and on an accessible route?

Yes [] No [] N/A []

In a one-bedroom or studio unit, is the sleeping area accessible and on an accessible route?

Yes [] No [] N/A []

In a two or more bedroom unit, are at least 2 bedrooms accessible and on an accessible route?

Yes [] No [] N/A []

If provided, are patios, terraces, balconies, carports, garages or other "outdoor spaces" accessible and on an accessible route?

Yes [] No [] N/A []

(Use Survey Form 12 to determine whether or not these spaces have the necessary features and Survey Form 9 to whether the doors to these spaces comply.)

Controls in Accessible Spaces (Including thermostats, light switches, etc.):

4.34.2(9); 4.27

Is there a 30 by 48 inch clear floor space in front of the controls which allows either a forward or parallel approach?

Yes [] No [] N/A []

If the clear ground space allows only a forward approach, then is the highest operable part of the controls no more than 48 inches from the ground?

Yes [] No [] N/A []

Survey Form 21: Dwelling Units (continued)

If the clear ground space allows a side approach to the controls, is the highest operable part of the controls no more than 54 inches from the ground?

Yes [] No [] N/A []

Are the controls operable with one hand?

Yes [] No [] N/A []

Do they not require tight grasping, pinching, or twisting of the wrist?

Yes [] No [] N/A []

Emergency Alarms:

4.34.2(10);4.1.2(13);4.28.4

Is there a visual alarm connected to the building emergency alarm system?

Yes [] No [] N/A []

OR

Is there a standard 110-volt electrical receptacle into which a visual alarm could be connected?

Yes [] No [] N/A []

Are instructions for this alarm provided?

Yes [] No [] N/A []

Bathroom:

(Note: Clear floor space at fixtures may overlap.)

4.34.2(12) Is at least one full bathroom accessible or adaptable, including a water closet, a lavatory and a bathtub or shower?

Yes [] No [] N/A []

4.34.5 Is the bathroom on an accessible route?

Yes [] No [] N/A []

Water Closets:

4.34.5.2(1)

Is the clear space at the toilet provided as shown in Figure 47(a)? (It can be on either side of the toilet.)

Yes [] No [] N/A []

4.34.5.2(2)

Is the water closet between 15 and 19 inches high measured from the top of the toilet seat to the finished floor?

Yes [] No [] N/A []

Is there structural reinforcement as shown in Figure 47(b)?

Yes [] No [] N/A []

If provided, are grab bars installed as shown in Figure 29?

Yes [] No [] N/A []

4.34.5.2(4)

Is the toilet paper installed within reach as shown in Figure 47(b)?

Yes [] No [] N/A []

Survey Form 21: Dwelling Units (continued)

Lavatory and Mirror:

4.34.5.3(1);4.22.6;4.19

Is the sink 34 inches or less above the floor? (measure from the floor to the top of the counter.)

Yes [] No [] N/A []

Is there at least 29 inches clearance from the floor to the bottom of the apron?

Yes [] No [] N/A []

OR

If a cabinet is provided under the lavatory in an adaptable bathroom, is it removable to provide this clearance?

Yes [] No [] N/A []

Do knee and toe clearances comply with Figure 31?

Yes [] No [] N/A []

OR

If a cabinet is provided under the lavatory in an adaptable bathroom, is it removable to provide this clearance?

Yes [] No [] N/A []

Is a clear space 30 x 48 inches provided in front of the lavatory to allow a forward approach?

Yes [] No [] N/A []

Does the clear floor space overlap an accessible route?

Yes [] No [] N/A []

Is no more than 19 inches of the required clear space measured underneath the lavatory?

Yes [] No [] N/A []

Are hot water and drain pipes under the lavatory insulated or otherwise covered?

Yes [] No [] N/A []

Are there no sharp or abrasive surfaces under the lavatory?

Yes [] No [] N/A []

4.34.5.3(1);4.22.6;4.19;4.27

Are the faucets operable with one hand and do they not require tight grasping, pinching, or twisting of the wrist?

Yes [] No [] N/A []

4.34.5.3(1);4.22.6;4.19.6

Are the mirrors mounted with the bottom edge of the reflecting surface no higher than 40 inches from the floor?

Yes [] No [] N/A []

4.34.5.3(3)

If a medicine cabinet is provided, is there a usable shelf inside no higher than 44 inches above the floor?

Yes [] No [] N/A []

4.34.5.1 Are clear spaces required for fixtures free of door swings?

Yes [] No [] N/A []

Bathtub:

4.34.5.4 If a bathtub is provided, does it have the following features?

Yes [] No [] N/A []

Dwelling Units: 5

Survey Form 21: Dwelling Units (continued)

4.34.5.4(1)

Is a clear floor space provided as shown in Figure 33?

Yes [] No [] N/A []

4.34.5.4(2)

Is a seat provided as shown in Figures 33 and 34?

Yes [] No [] N/A []

Is the seat mounted securely and does it not slip during use?

Yes [] No [] N/A []

4.34.5.4(3)

Are structural reinforcements or other provisions that will allow installation of grab bars provided in the locations shown in Figure 48?

Yes [] No [] N/A []

If grab bars are installed, are they as shown in Figure 34?

Yes [] No [] N/A []

4.16.4;4.26

Is the diameter of the grab bar between 1-1/4 inch and 1-1/2 inch?

Yes [] No [] N/A []

OR

Does the shape provide an equivalent gripping surface?

Yes [] No [] N/A []

Are the grab bars 1-1/2 inch away from the wall?

Yes [] No [] N/A []

Are the grab bars secured so that they do not rotate within their fittings?

Yes [] No [] N/A []

Is the grab bar and the wall adjacent to it free of any sharp or abrasive elements?

Yes [] No [] N/A []

4.34.5.4(4)

Are the controls located as shown in Figure 34?

Yes [] No [] N/A []

4.34.5.4(4);4.27.4

Are the controls operable with one hand, and do they not require any tight grasping, pinching, or twisting of the wrist?

Yes [] No [] N/A []

4.34.5.4(5)

Is a shower unit provided which can be used as fixed unit at various heights or as a hand held shower with a hose at least 60 inches long?

Yes [] No [] N/A []

4.34.5.6 Does the bathtub enclosure not obstruct the controls or transfer from a wheelchair to the bathtub seat?

Yes [] No [] N/A []

Is the bathtub rim smooth and free of tracks?

Yes [] No [] N/A []

Dwelling Units: 6

Survey Form 21: Dwelling Units (continued)

Showers:

4.34.5.5(1)

Does the shower stall size and clear floor space comply with either Figure 35(a) or 35(b)? (Note: 35(b) fits into the same space as a standard 60 inch long bathtub.)

Yes [] No [] N/A []

4.34.5.5(2)

Is the seat placed as shown in Figure 36?

Yes [] No [] N/A []

Is the seat 17 to 19 inches high measured from the bathroom floor?

Yes [] No [] N/A []

Does it extend the full depth of the stall?

Yes [] No [] N/A []

Is it opposite the controls?

Yes [] No [] N/A []

Is the seat mounted securely and does it not slip during use?

Yes [] No [] N/A []

4.34.5.5(3)

Is structural reinforcement provided as shown in Figure 49?

Yes [] No [] N/A []

If provided, are grab bars placed as shown in Figure 37?

Yes [] No [] N/A []

4.34.5.5(3);4.26

Is the diameter of the grab bar between 1-1/4 inch and 1-1/2 inch?

Yes [] No [] N/A []

OR

Does the shape provide an equivalent gripping surface?

Yes [] No [] N/A []

Are the grab bars 1-1/2 inch away from the wall?

Yes [] No [] N/A []

Are the grab bars secured so that they do not rotate within their fittings?

Yes [] No [] N/A []

Is the grab bar and the wall adjacent to it free of any sharp or abrasive elements?

Yes [] No [] N/A []

4.34.5.5(4)

Are controls located as in Figure 37?

Yes [] No [] N/A []

Are they mounted on the wall opposite the seat?

Yes [] No [] N/A []

4.34.5.5(4);4.27.4

Are the controls operable with one hand, and do they not require any tight grasping, pinching, or twisting of the wrist?

Yes [] No [] N/A []

4.34.5.5(5)

Can the shower head height be adjusted, or can it be used as a hand held shower with a hose at least 60 inches long?

Yes [] No [] N/A []

4.34.5.6 Does the shower enclosure not obstruct the controls or transfer from a wheelchair onto the shower seat?

Yes [] No [] N/A []

Dwelling Units: 7

Survey Form 21: Dwelling Units (continued)

Laundry (including laundry machines in kitchens):

4.34.2(14);4.34.7.1

Are the laundry facilities located on an accessible route?

Yes [] No [] N/A []

4.34.7 Are washing machines and clothes dryers front loading?

Yes [] No [] N/A []

4.34.7.3;4.27

Is a 30 x 48 inch clear space provided at the machines allowing either a forward or parallel approach?

Yes [] No [] N/A []

If a forward approach is provided, is the highest operable part of the machine no higher than 48 inches from the floor?

Yes [] No [] N/A []

If a parallel approach is provided, is the highest operable part of the machine no higher than 54 inches from the floor?

Yes [] No [] N/A []

Are the machine controls operable with one hand?

Yes [] No [] N/A []

Do they not require any tight grasping, pinching, or twisting of the wrist?

Yes [] No [] N/A []

4.2.3 Is there a 60 x 60 inch or T-shaped turning space so that tenants can adjust their position at the machines and turn to exit the laundry space?

Yes [] No [] N/A []

Kitchen: Accessible or Adaptable:

4.34.2(13);4.34.6

Is the kitchen on an accessible route?

Yes [] No [] N/A []

4.34.6.1 Is the clearance between all opposing cabinet, counter, appliances or walls at least 40 inches except in U-shaped kitchens where the clearance must be 60 inches?

Yes [] No [] N/A []

4.34.6.2;4.2.4

Is there 30 x 48 inches clear space at appliances?

Yes [] No [] N/A []

Counters:

4.34.6.4 Is there at least one 30 inch section of counter which is no more than 34 inches above the floor measured from the floor to the top of the counter?

Yes [] No [] N/A []

Does this section have a 30 inch wide and 19 inch deep clear knee space?

Yes [] No [] N/A []

OR

If this section of counter has base cabinets, are they removable to provide the minimum clearance?

Yes []

No []

N/A []

Dwelling Units: 8

Survey Form 21: Dwelling Units (continued)

Does the floor finish extend underneath the counter to the wall?

Yes [] No [] N/A []

Is the counter and its supporting structure 2 inches thick or less?

Yes [] No [] N/A []

Is there a 30 x 48 inch clear floor space at this counter? (19 of the 48 inches can extend under the counter.)

Yes [] No [] N/A []

Are there no sharp or abrasive surfaces under the counter?

Yes [] No [] N/A []

Sink:

4.34.6.5(1)

Is the sink and surrounding counter mounted no more than 34 inches above the floor measured from the floor to the top of the counter?

Yes [] No [] N/A []

OR

Is it adjustable or replaceable as a unit to provide alternative heights of 28 inches, 32 inches, or 36 inches measured from the floor to the top of the counter?

Yes [] No [] N/A []

Is the sink and counter area at least 30 inches wide?

Yes [] No [] N/A []

4.34.6.5(2)

Is the rough-in plumbing able to accept connection of supply and drain pipes for sinks mounted at a height of 28 inches?

Yes [] No [] N/A []

4.34.6.5(3)

Is the sink depth a maximum of 6.5 inches? (Only one bowl of a double or triple bowl sink needs to meet this requirement.)

Yes [] No [] N/A []

4.34.6.5(4);4.27.4

Are the faucets operable with one hand and do they not require any tight grasping, pinching or twisting of the wrist?

Yes [] No [] N/A []

4.34.6.5(6)

Is the counter and supporting structure 2 inches thick or less?

Yes [] No [] N/A []

4.34.6.5(7)

Is there 30 x 48 inches clear floor space allowing a forward approach to the sink?

Yes [] No [] N/A []

Is there a clear knee space 30 inches wide and 19 inches deep under the counter?

Yes [] No [] N/A []

OR

4.34.6.5(5)

If provided, are base cabinets at the sink removable to provide at least a 30 inch wide knee space under the sink and surrounding counter?

Yes [] No [] N/A []

Does the finished floor extend under the counter to the wall?

Yes [] No [] N/A []

Dwelling Units: 9

Survey Form 21: Dwelling Units (continued)

4.34.6.5(8)

Are there no sharp or abrasive surface under the sink?

Yes [] No [] N/A []

Are the hot water and drain pipes insulated or otherwise covered?

Yes [] No [] N/A []

Range and Cooktop:

4.34.6.6; Is a clear floor space at least 30 x 48 inches which allow either a
4.34.6.2 forward or a parallel approach provided at the range or cooktop?

Yes [] No [] N/A []

4.34.6.6; Can the controls be operated with one hand, and do they not require
4.34.6.3; any tight grasping, pinching, or twisting of the wrist?

4.27 Yes [] No [] N/A []

Does the location of the controls allow them to be used without
reaching across burners?

Yes [] No [] N/A []

4.34.6.6 If there is knee space underneath the cooktop, is there
insulation or other protection against burns, abrasions, or
electrical shock?

Yes [] No [] N/A []

Oven:

4.34.6.7; Is there a clear floor space at least 30 x 48 inches which allows
4.34.6.2 either a forward or a parallel approach to the oven?

Yes [] No [] N/A []

4.34.6.7; Can the oven controls be operated with one hand, and do they not
4.34.6.3; require any tight grasping, pinching, or twisting of the wrist?

4.27 Yes [] No [] N/A []

Does the location of the controls allow them to be used without
reaching across burners?

Yes [] No [] N/A []

4.34.6.7 Is the oven self-cleaning?

Yes [] No [] N/A []

OR

Is it located next to an adjustable height counter with knee space
below?

Yes [] No [] N/A []

If the oven is the side opening type, is the door latch next to the
open counter space and is there a pull out shelf under the oven at
least as wide as the oven and 10 inches deep?

Yes [] No [] N/A []

Refrigerator/Freezer:

(If the refrigerator/freezer is a side-by-side type, check N/A for the next
two questions.)

4.34.6.8 If the refrigerator/freezer is an over/under type, is at least 50%

Survey Form 21: Dwelling Units (continued)

of the freezer space within 54 inches of the floor and if 100% of freezer space is not within these limits, is the freezer self-defrosting?

Yes [] No [] N/A []

Is 100% of the refrigerator space and controls within 54 inches of the floor?

Yes [] No [] N/A []

4.34.6.8; Can the refrigerator controls be operated with one hand, and do they
4.34.6.3; not require any tight grasping, pinching, or twisting of the wrist?

4.27 Yes [] No [] N/A []

Does a clear floor space of 30 x 48 inches provide either a front or a parallel approach to the refrigerator/freezer?

Yes [] No [] N/A []

If only a front approach is provided, are the controls no higher than 48 inches?

Yes [] No [] N/A []

If a parallel approach is provided, are the controls no higher than 54 inches?

Yes [] No [] N/A []

Dishwasher:

4.34.6.9 Is all rack space accessible from the front for loading and unloading dishes?

Yes [] No [] N/A []

4.34.6.9; Is a clear floor space 30 x 48 inches provided at the dishwasher?

4.34.6.2 Yes [] No [] N/A []

4.34.6.9;4.34.6.3;4.27

Are the controls operable with one hand?

Yes [] No [] N/A []

Do they not require any tight grasping, pinching, or twisting of the wrist?

Yes [] No [] N/A []

Kitchen Storage:

4.34.6.10;4.25.2

Is there a clear floor space 30 x 48 inches at storage facilities which allows for either a forward or side approach in a wheelchair?

Yes [] No [] N/A []

4.34.6.10;4.25.3

If a side approach is provided, is the storage space between 9 and 54 inches from the floor?

Yes [] No [] N/A []

If a front approach is provided, is the storage space between 15 and 48 inches from the floor?

Yes [] No [] N/A []

Survey Form 21: Dwelling Units (continued)

4.34.6.10;4.25.4;4.27.4

Is the hardware operable with one hand and does it not require any tight grasping, pinching, or twisting of the wrist?

Yes [] No [] N/A []

4.34.6.10(2)

Are the door pulls for wall cabinets as close to the bottom of the cabinet doors as possible?

Yes [] No [] N/A []

Are base cabinet handles as close to the top of the cabinet doors as possible?

Yes [] No [] N/A []

4.34.6.10(1)

Is at least one usable shelf of all cabinets and storage shelves 48 inches or less above the floor?

Yes [] No [] N/A []

Controls:

4.34.6.3;4.27

Do all of the controls in the kitchen (including light switches, garbage disposal switches, fan switches, etc.) meet the following criteria:

Yes [] No [] N/A []

Is there a clear floor space which allows either a forward or a parallel approach to the controls?

Yes [] No [] N/A []

If only a forward approach is provided, are the controls no more than 48 inches from the ground?

Yes [] No [] N/A []

If a parallel approach is provided, are the controls no more than 54 inches from the ground?

Yes [] No [] N/A []

Are the controls operable with one hand and do they not require any tight grasping, pinching or twisting of the wrist?

Yes [] No [] N/A []

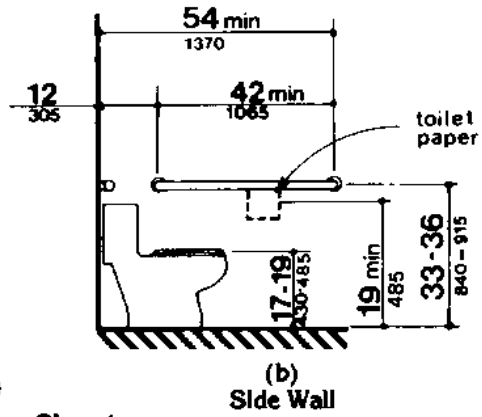
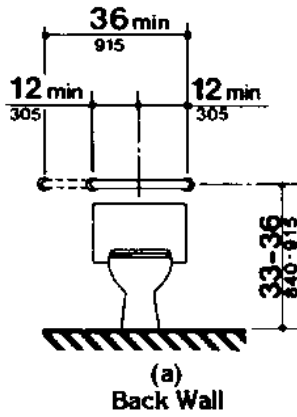


Fig. 29
Grab Bars at Water Closets

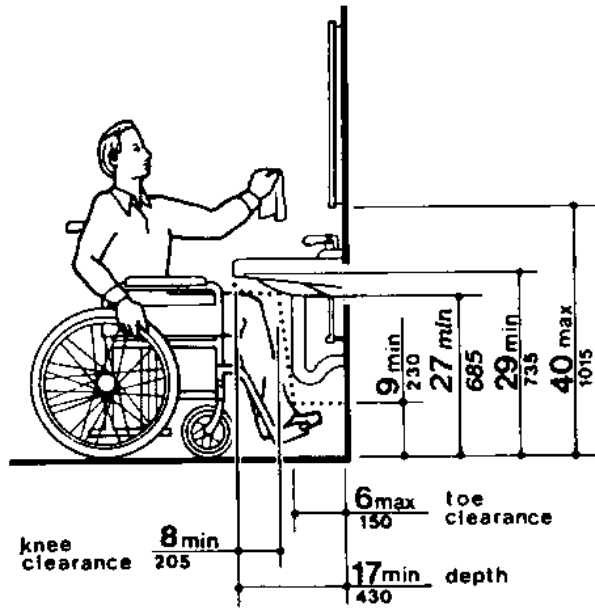
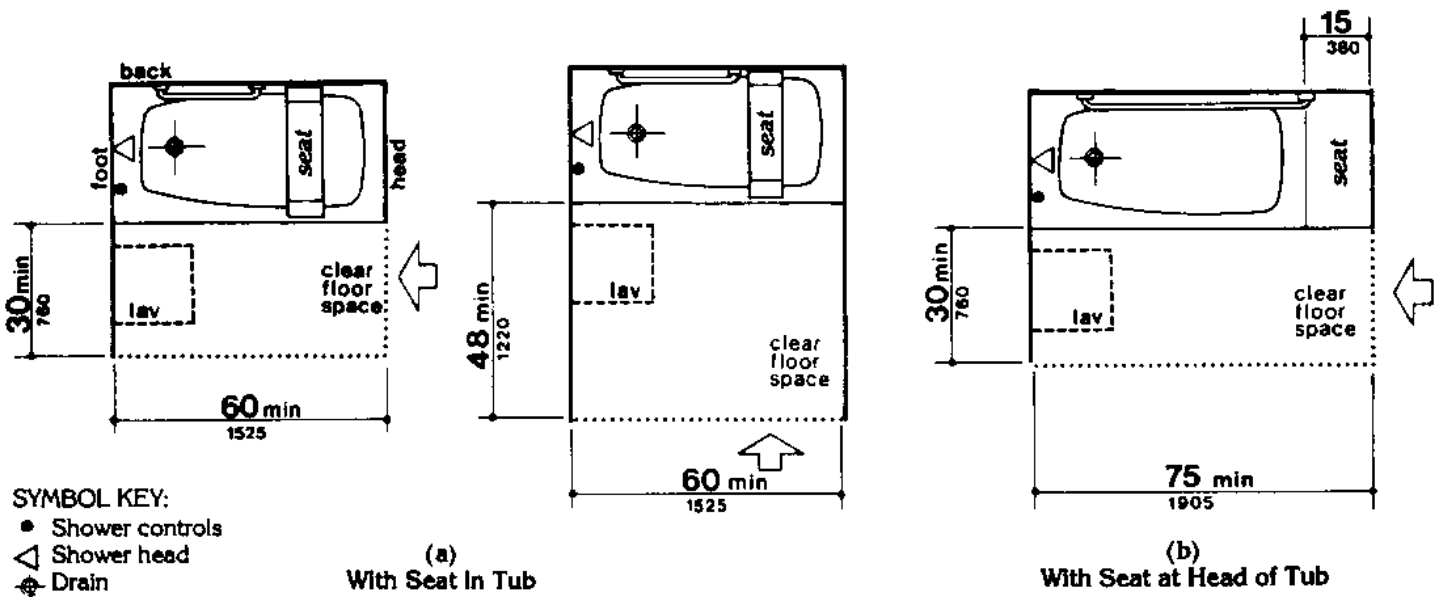


Fig. 31
Lavatory Clearances



SYMBOL KEY:
 • Shower controls
 △ Shower head
 ⊕ Drain

Fig. 33
Clear Floor Space at Bathtubs

Clearances & Clear Floor Space at Bathtubs]

Dwelling Units: 13

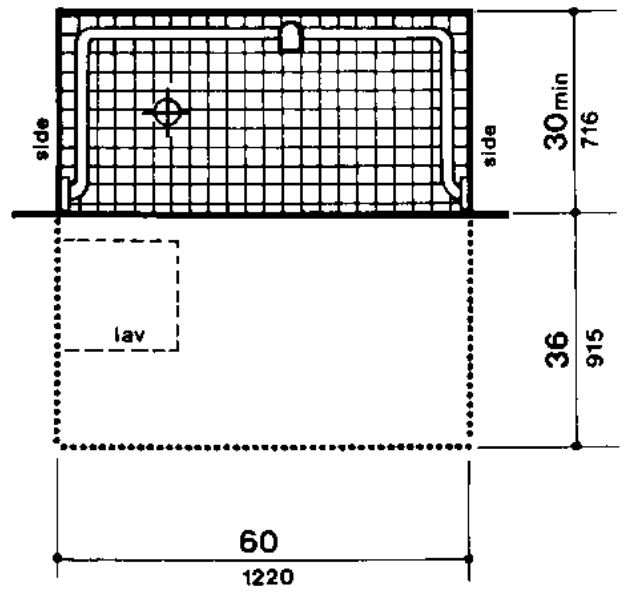
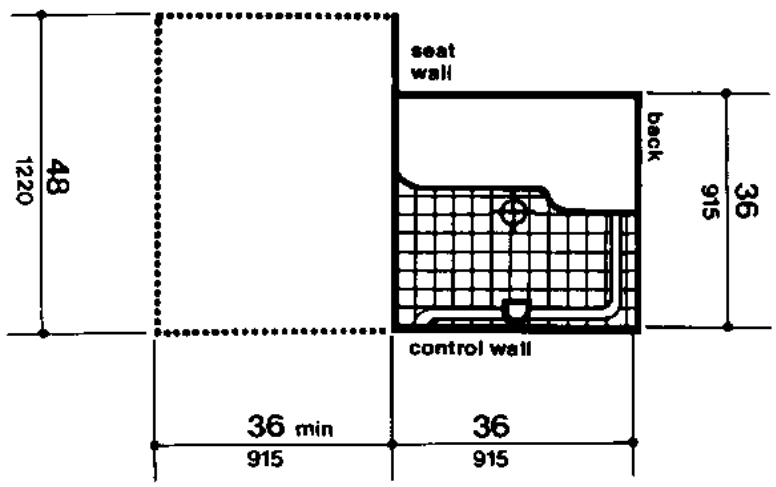
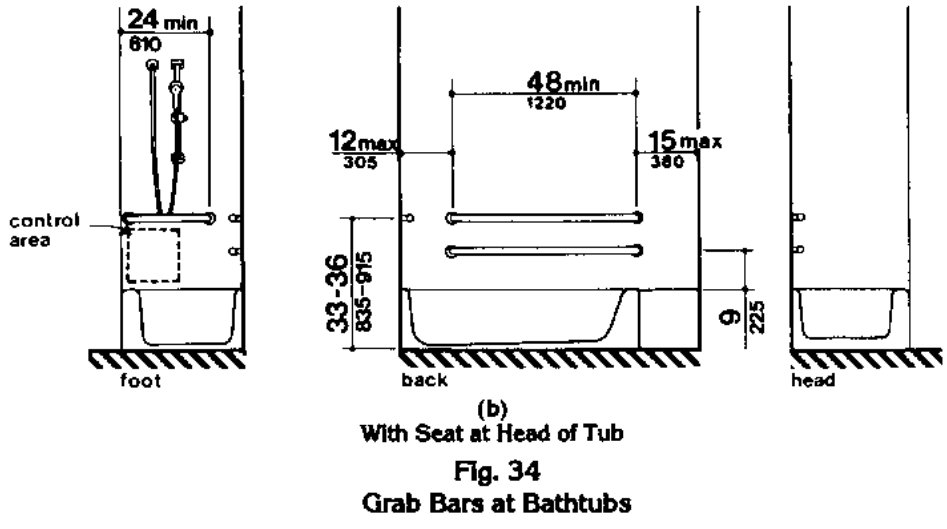
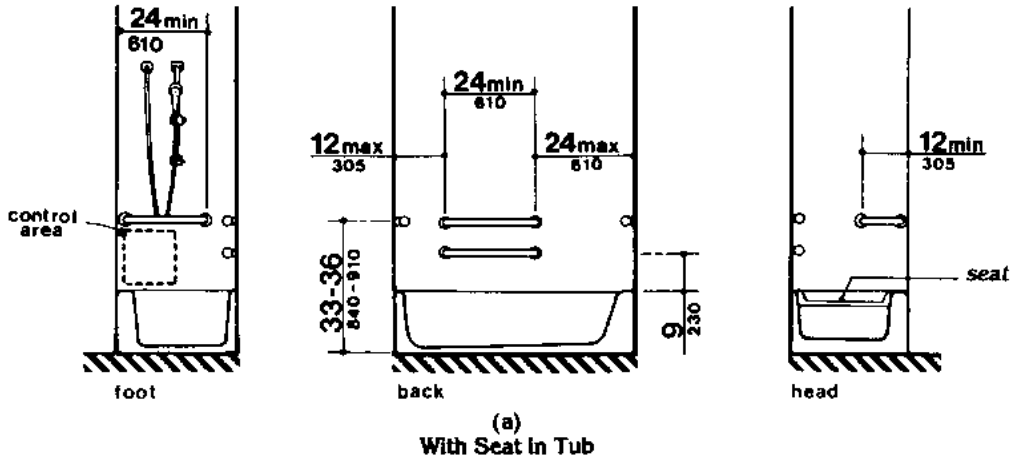


Fig. 35
Shower Size and Clearances

Dwelling Units: 14

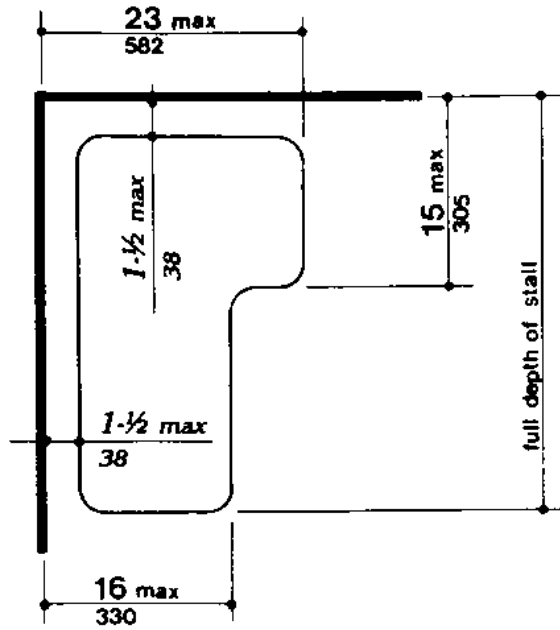
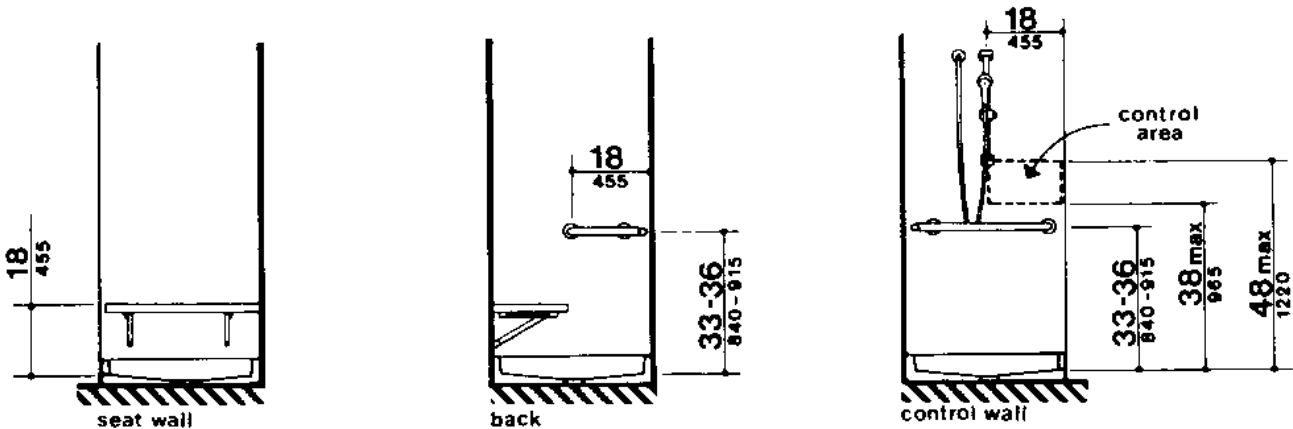
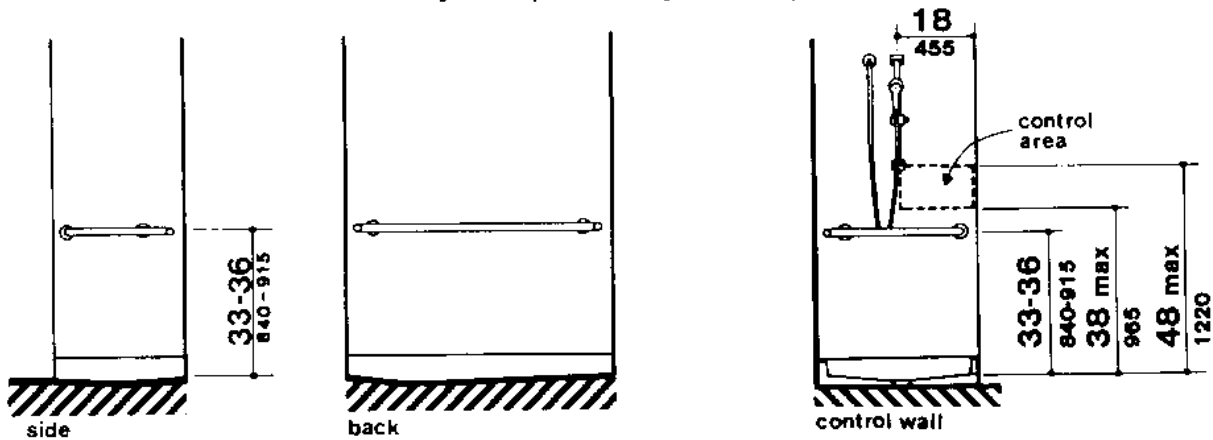


Fig. 36
Shower Seat Design



(a)

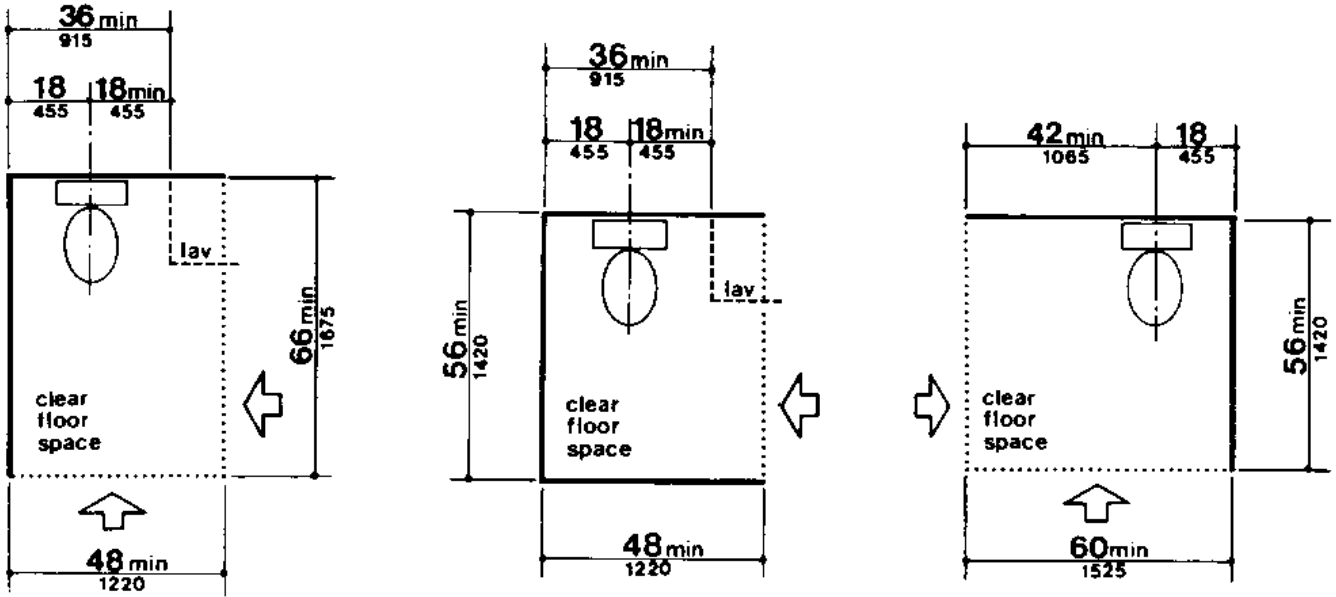
36-in by 36-in (915-mm by 915-mm) Stall



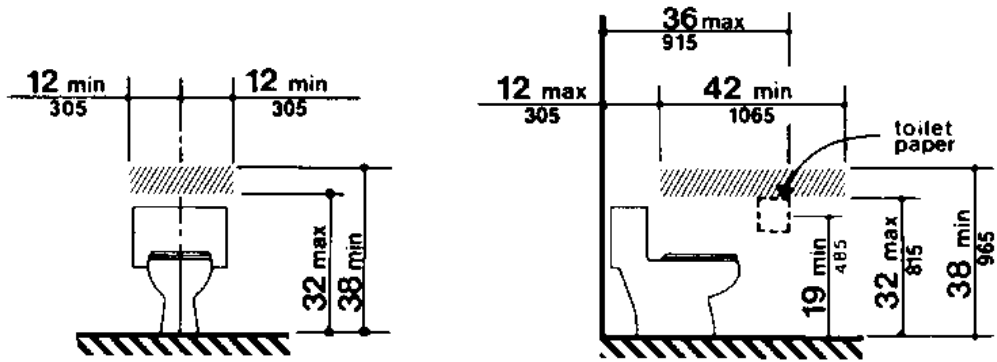
(b)

30-in by 60-in (760-mm by 1525-mm) Stall

Fig. 37
Grab Bars at Shower Stalls



(a)
Clear Floor Space for Adaptable Bathrooms



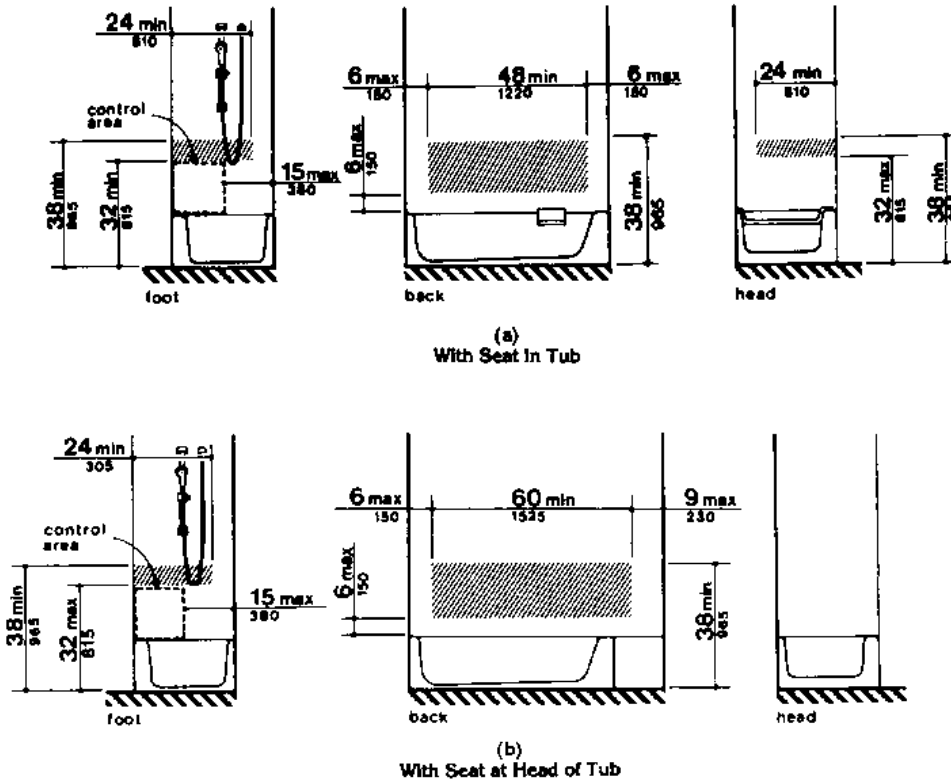
NOTE: The hatched areas are reinforced to receive grab bars.

(b)
Reinforced Areas for Installation of Grab Bars

Fig. 47
Water Closets in Adaptable Bathrooms

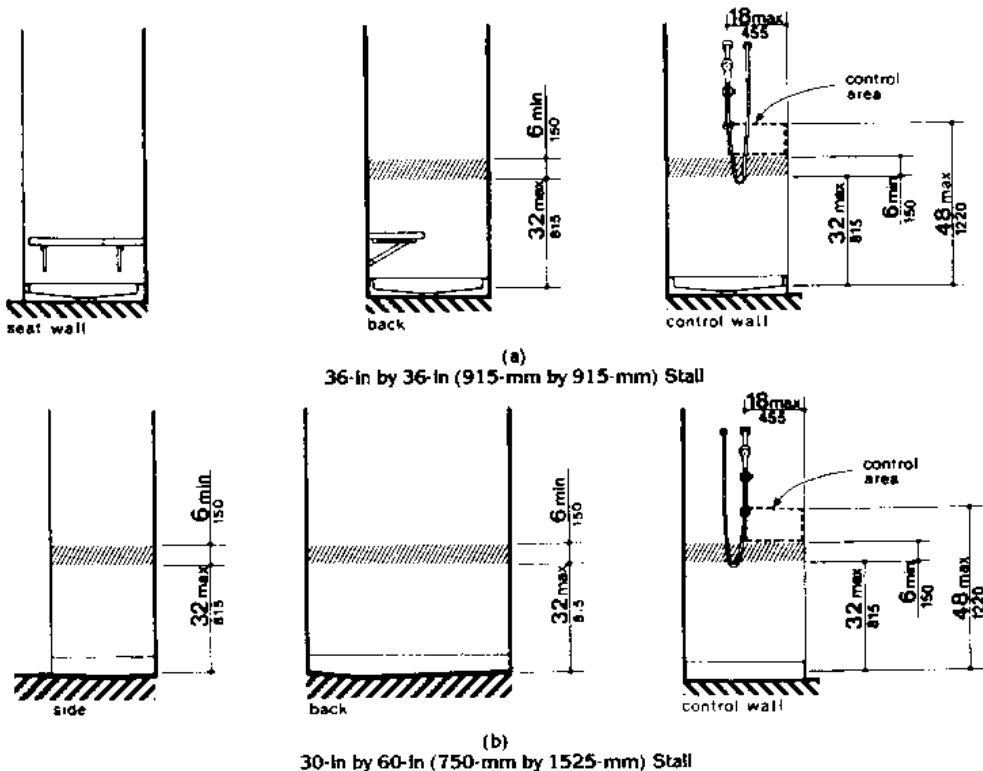
Dwelling Units: 16

Survey Form 21: Dwelling Units (figures)



NOTE: The hatched areas are reinforced to receive grab bars.

Fig. 48
Location of Grab Bars and Controls of Adaptable Bathtubs



NOTE: The hatched areas are reinforced to receive grab bars.

Fig. 49
Location of Grab Bars and Controls of Adaptable Showers

Bathtubs & Location of Grab Bars and Controls of Adaptable Showers]

Dwelling Units: 17

Appendices

Definitions:

Accessible: Describes a site, building, facility, or portion thereof that complies with these standards and that can be approached, entered, and used by physically disabled people.

Accessible Route: A continuous unobstructed path connecting all accessible elements and spaces in a building or facility. Interior accessible routes may include corridors, floors, ramps, elevators, lifts, and clear floor space at fixtures. Exterior accessible routes may include parking access aisles, curb ramps, walks, ramps, and lifts.

Access Aisle: An accessible pedestrian space between elements, such as parking spaces, seating, and desks, that provides clearances appropriate for use of the elements.

Adaptability: The ability of certain building spaces and elements, such as kitchen counters, sinks, and grab bars, to be added or altered so as to accommodate the needs of persons with different types or degrees of disability.

Assembly Area: A room or space accommodating fifty or more individuals for religious, recreational, educational, political, social, or amusement purposes, or for the consumption of food and drink, including all connected rooms or spaces with a common means of egress and ingress. Such areas as conference rooms would have to be accessible in accordance with other parts of this standard but would not have to meet all of the criteria associated with assembly areas.

Dwelling Unit: A single unit of residence which provides a kitchen or food preparation area, in addition to rooms and space for living, bathing, sleeping, and the like. A single family home is a dwelling unit, and dwelling units are to be found in such housing types as townhouses and apartment buildings.

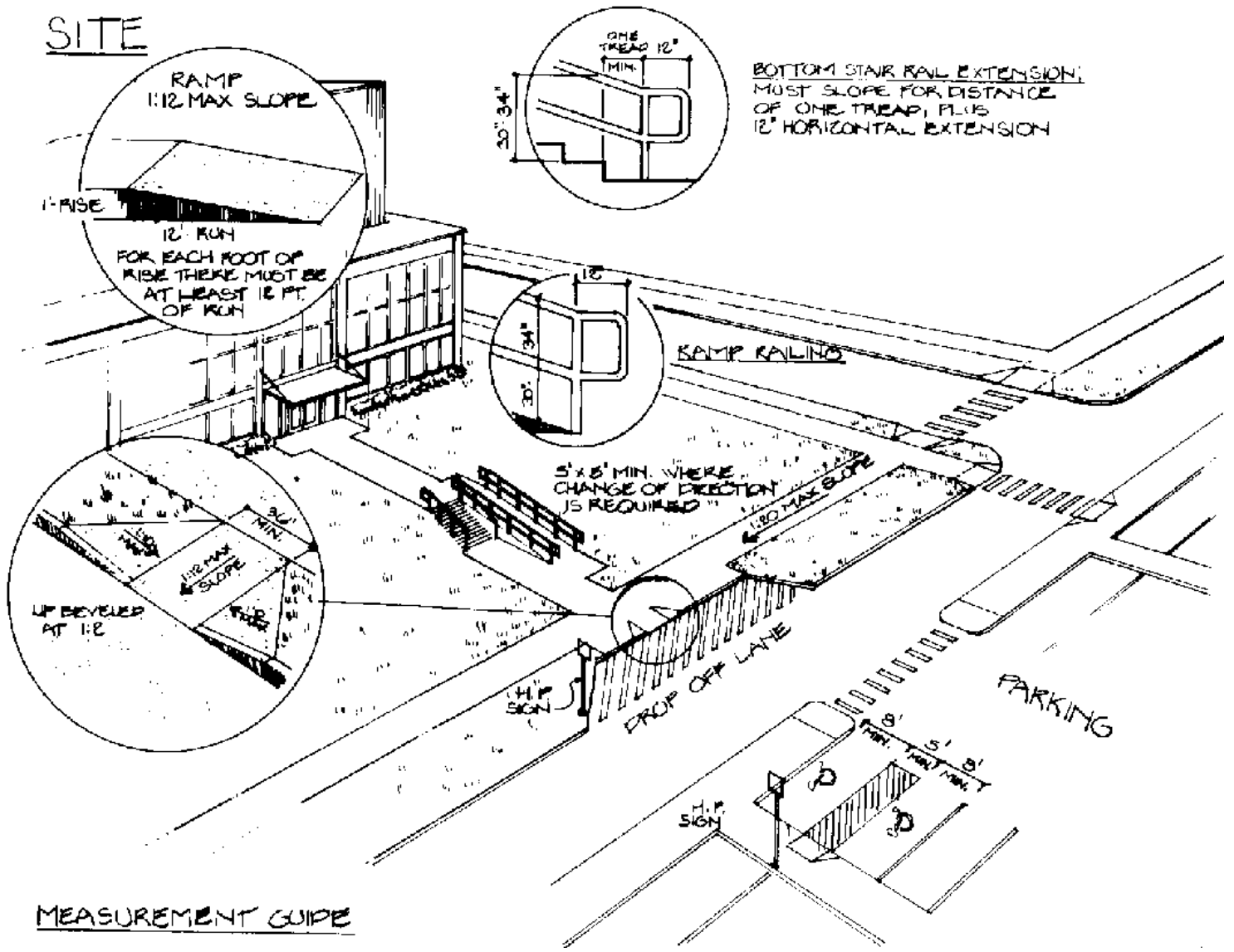
List of Consumer Information for Adaptable Dwelling Units (4.34.4):

- (1) Notification of the alternate heights available for the kitchen counter and sink, and the existence of removable cabinets and bases, if provided, under counters, sinks, and lavatories.
- (2) Notification of the provisions for the installation of grab bars at toilets, bathtubs, and showers.
- (3) Notification that the dwelling unit is equipped to have a visual emergency alarm installed.
- (4) Identification of the location where information and instructions are available for changing the height of counters, removing cabinets and bases, installing a visual emergency alarm system, and installing grab bars.
- (5) Notification that the dwelling unit has been designed in accordance with the Uniform Federal Accessibility Standards.

In addition, the parties who will be responsible for making adaptation shall be provided with the following information:

- (1) Instructions for adjusting or replacing kitchen counter and sink heights and for removing cabinets.
- (2) A scale drawing showing methods and locations for the installation of grab bars.
- (3) A scale drawing showing the location of adjustable or replaceable counter area and removable cabinets.
- (4) Identification of the location of any equipment and parts required for adjusting or replacing counter tops, cabinets, and sinks.
- (5) Instructions for installing a visual emergency alarm system, if the dwelling unit is equipped for such an installation.

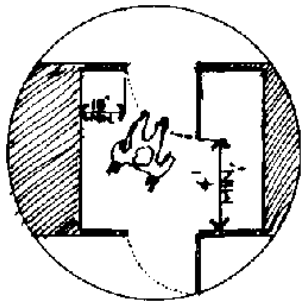
SITE



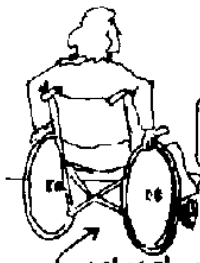
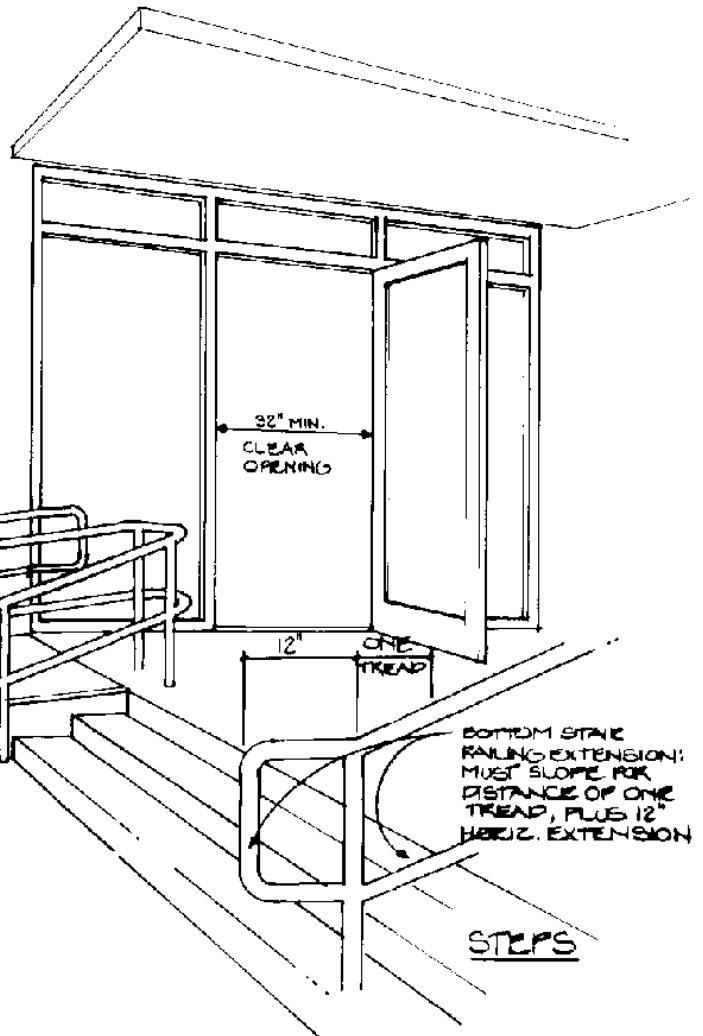
MEASUREMENT GUIDE

BOTTOM STAIR RAIL EXTENSION; MUST SLOPE FOR DISTANCE OF ONE TREAD, PLUS 12" HORIZONTAL EXTENSION

ENTRANCE



PLAN AT VESTIBULE



60" x 60" MIN. LANDING
REQUIRED WHERE CHANGE
OF DIRECTION OCCURS

EDGE PROTECTION
RAMP

BOTTOM STAIR
RAILING EXTENSION:
MUST SLOPE FOR
DISTANCE OF ONE
TREAD, PLUS 12"
HORIZ. EXTENSION

STEPS



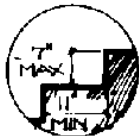
RAILING



THRESHOLD



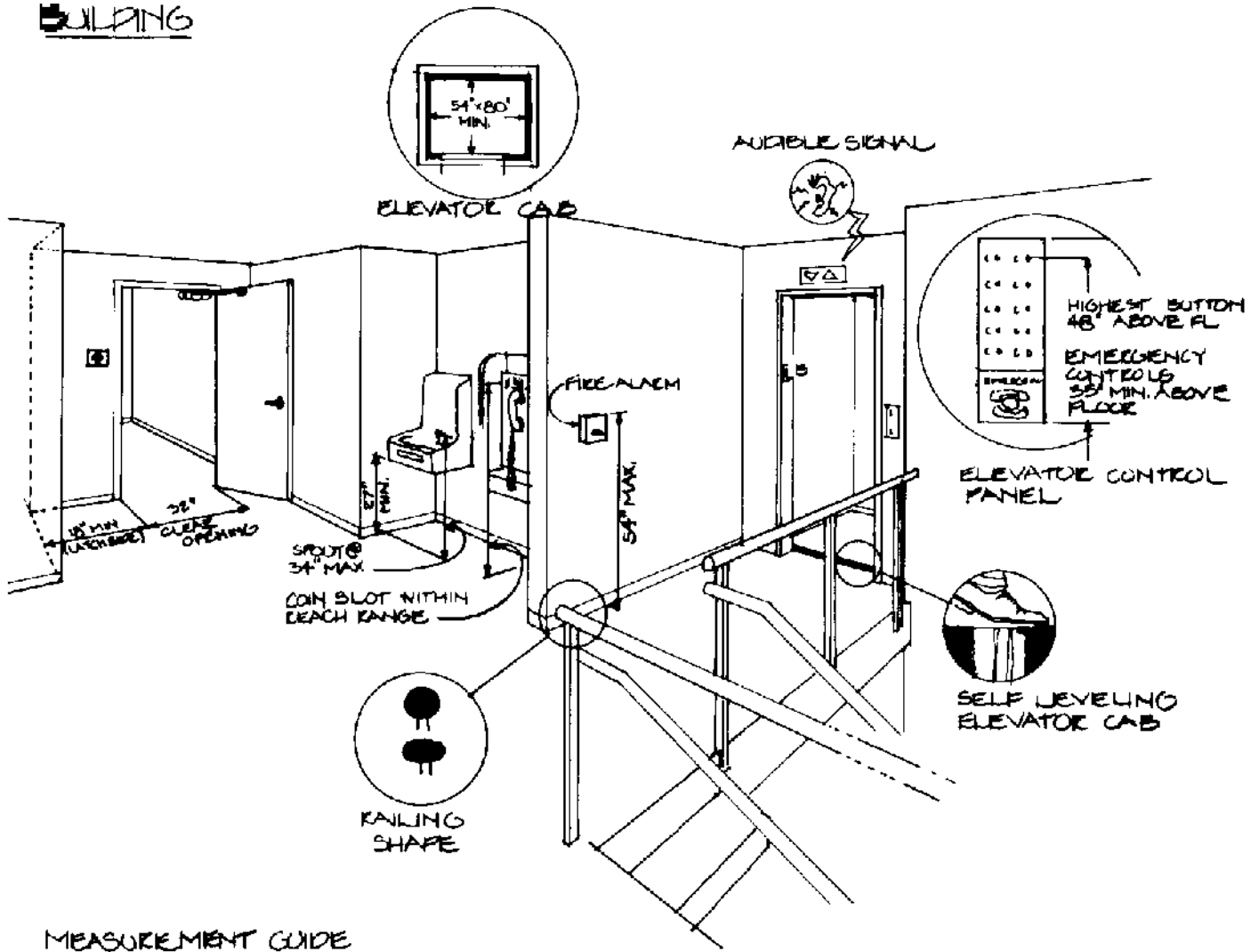
NOSING



STAIR RISE &
TREAD

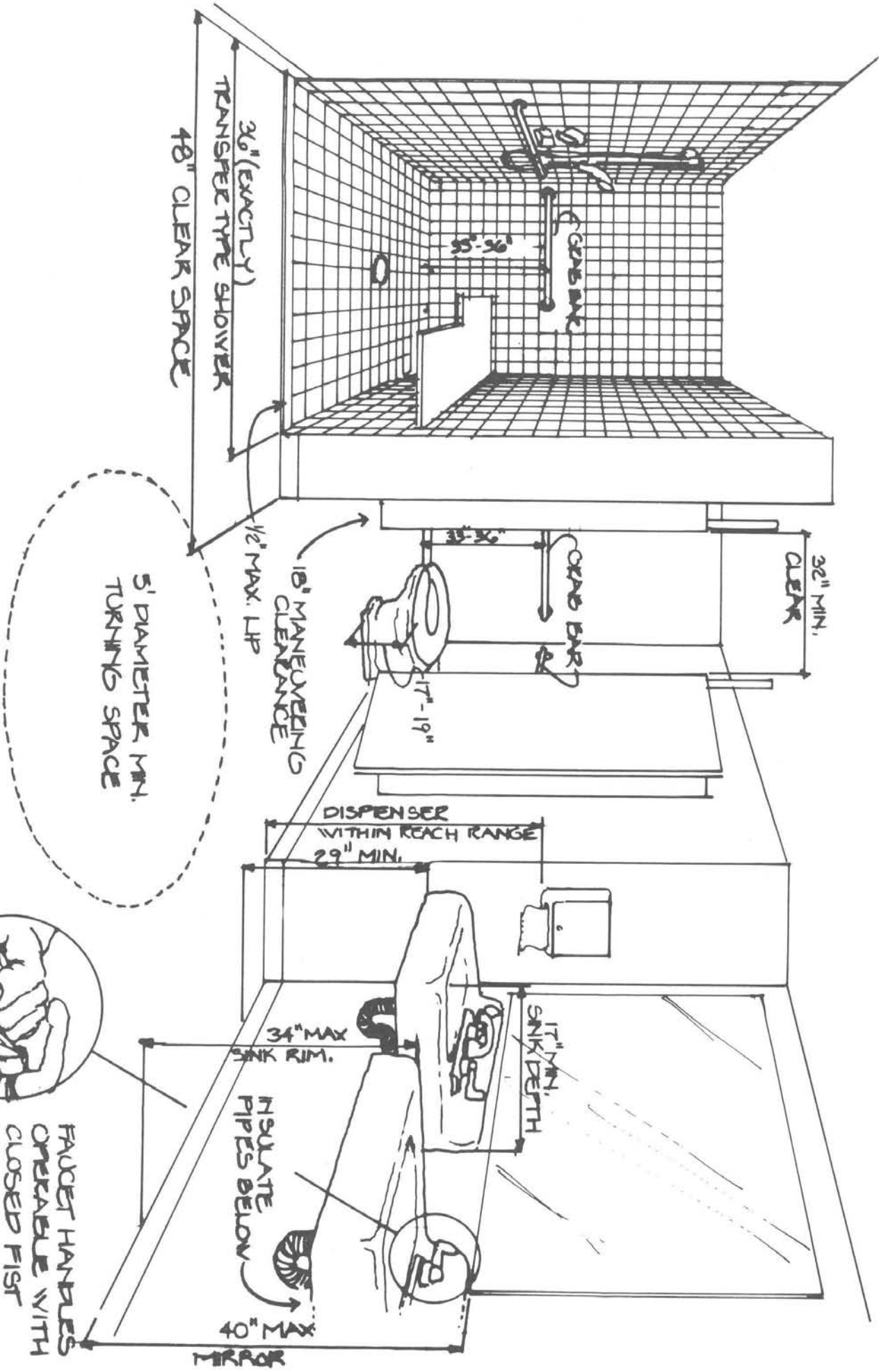
MEASUREMENT GUIDE

BUILDING



MEASUREMENT GUIDE

MEASUREMENT GUIDE



FAUCET HANDLES OPERABLE WITH CLOSED FIST (GRASPING HANDLE NOT REQUIRED)